

Recombinant Active Human NAE1/UBA3 Complex Protein, His/GST-tagged

Cat. No. NAE1-33H Lot. No. (See product label)

SPECIFICATION

Product Overview	Recombinant human NAE1 (2-end) and full-length human UBA3 were expressed by baculovirus in Sf9 insect cells. NAE1 used an N-terminal His tag, the gene accession number is NM_003905. UBA3 used an N-terminal GST tag and the gene accession number is BC022853.
Species	Human
Source	Insect Cells
ProteinLength	2-end a.a.
Description	The protein encoded by this gene binds to the beta-amyloid precursor protein. Beta-amyloid precursor protein is a cell surface protein with signal-transducing properties, and it is thought to play a role in the pathogenesis of Alzheimer's disease. In addition, the encoded protein can form a heterodimer with UBE1C and bind and activate NEDD8, a ubiquitin-like protein. This protein is required for cell cycle progression through the S/M checkpoint. Three transcript variants encoding different isoforms have been found for this gene.
Molecular Mass	NAE1: Approx 65 kDa UBA3: Approx 73 kDa
Purity	> 70%

 Tel: 1-631-559-9269 1-516-512-3133

 Email: info@creative-biomart.com  Fax: 1-631-938-8127

 45-1 Ramsey Road, Shirley, NY 11967, USA

Stability	One year at -70 centigrade from data of shipment.
Storage	Store product at -70 centigrade. For optimal storage, aliquot target into smaller quantities after centrifugation and store at recommended temperature. For most favorable performance, avoid repeated handling and multiple freeze/thaw cycles.
Concentration	0.1 µg/µL
Storage Buffer	<p>Recombinant protein complex is a combination of the following 2 buffer systems, adjusted to optimize the NAE1 (phosphate buffer system) and UBA3 (Tris buffer system) proportions:</p> <p>50 mM sodium phosphate, pH 7.5, 300 mM NaCl, 150 mM imidazole, 0.25 mM DTT, 25% glycerol.</p> <p>50 mM Tris-HCl, pH 7.5, 150 mM NaCl, 10 mM glutathione, 0.1 mM EDTA, 0.25 mM DTT, 25% glycerol.</p>
Shipping	Dry ice

GENE INFORMATION

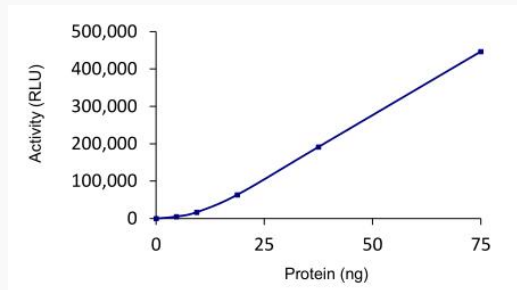
Gene Name	NAE1 NEDD8 activating enzyme E1 subunit 1 [Homo sapiens (human)]
Official Symbol	NAE1
Synonyms	NAE1; NEDD8 activating enzyme E1 subunit 1; HPP1; ula-1; APPBP1; A-116A10.1; NEDD8-activating enzyme E1 regulatory subunit; APP-BP1; NEDD8-activating enzyme E1 subunit; amyloid beta precursor protein binding protein 1, 59kDa; amyloid beta precursor protein-binding protein 1, 59 kDa; amyloid beta precursor protein-binding protein 1, 59kD; amyloid protein-binding protein 1; proto-oncogene protein 1; protooncogene protein 1

 Tel: 1-631-559-9269 1-516-512-3133

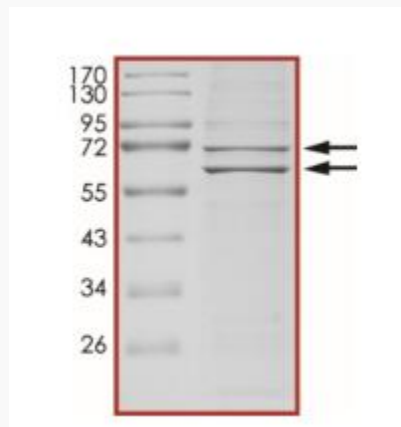
 Email: info@creative-biomart.com  Fax: 1-631-938-8127

 45-1 Ramsey Road, Shirley, NY 11967, USA

Gene ID	8883
mRNA Refseq	NM_003905
Protein Refseq	NP_003896
MIM	603385
UniProt ID	Q13564

Specific Activity


The specific activity of NAE1/UBA3 was determined to be 6.4 nmol/min/mg as per activity assay protocol.

Purity


Tel: 1-631-559-9269 1-516-512-3133

Email: info@creative-biomart.com Fax: 1-631-938-8127

45-1 Ramsey Road, Shirley, NY 11967, USA



The purity of NAE1/UBA3 was determined to be >70% by densitometry.

 Tel: 1-631-559-9269 1-516-512-3133

 Email: info@creative-biomart.com  Fax: 1-631-938-8127

 45-1 Ramsey Road, Shirley, NY 11967, USA