

# Recombinant Human NAE1 Protein, Myc/DDK-tagged, C13 and N15-labeled

**Cat. No.** NAE1-4720H    **Lot. No.** (See product label)

## SPECIFICATION

<b>Product Overview</b>	NAE1 MS Standard C13 and N15-labeled recombinant protein (NP_001018170) with a C-terminal MYC/DDK tag, was expressed in HEK293 cells.
<b>Species</b>	Human
<b>Source</b>	HEK293
<b>Description</b>	The protein encoded by this gene binds to the beta-amyloid precursor protein. Beta-amyloid precursor protein is a cell surface protein with signal-transducing properties, and it is thought to play a role in the pathogenesis of Alzheimer's disease. In addition, the encoded protein can form a heterodimer with UBE1C and bind and activate NEDD8, a ubiquitin-like protein. This protein is required for cell cycle progression through the S/M checkpoint. Three transcript variants encoding different isoforms have been found for this gene.
<b>Molecular Mass</b>	60.2 kDa
<b>AA Sequence</b>	MAQLGKLLKEQKYDRQLRLWGDHGGQEALESAAHVCLINATATGTEILKNLVLPGIGSF TIIDGNQVSGEDAGNNFFLQRSSIGKNRAEAAMEFLQELNSDVSGSFVEESPENLLD NDPSFFCRFTVVVATQLPESTSLRLADVLWNSQIPLLICRTYGLVGYMRIIIKEHPVIES HPDNALEDLRLDKPFPELREHFQSYDLDHMEKKDHSHTPWIVIIAKYLAQWYSETNG RIPKTYKEKEDFRDLIRQQGILKNENGAPEDENFEEAIKNVNTALNTTQIPSSIEDIFND DRCINITKQTPSWILARALKEFVAKEGQGNLPVRGTIPDMIADSGKYIKLQNVYREK

 Tel: 1-631-559-9269    1-516-512-3133

 Email: [info@creative-biomart.com](mailto:info@creative-biomart.com)     Fax: 1-631-938-8127

 45-1 Ramsey Road, Shirley, NY 11967, USA

AKKDAAAVGNHVAKLLQSIGQAPESISEKELKLLCSNSAFLRVVRCRSLAEEYGLDTI  
 NKDEIISMDNPDNEIVLYLMLRAVDRFHKQQGRYPGVSNYQVEEDIGLKLKSLTGF  
 LQEYGLSVMVKDDYVHEFCRYGAAEPHTIAAFLGGAAAQEVIKIITKQFVIFNNTYIYS  
 GMSQTSATFQLTRTRPLEQKLISEEDLAANDILDYKDDDDKV

**Purity** > 80% as determined by SDS-PAGE and Coomassie blue staining

**Stability** Stable for 3 months from receipt of products under proper storage and handling conditions.

**Storage** Store at -80 centigrade. Avoid repeated freeze-thaw cycles.

**Concentration** 50 µg/mL as determined by BCA

**Storage Buffer** 100 mM glycine, 25 mM Tris-HCl, pH 7.3.

## GENE INFORMATION

**Gene Name** NAE1 NEDD8 activating enzyme E1 subunit 1 [ Homo sapiens (human) ]

**Official Symbol** NAE1

**Synonyms** NAE1; NEDD8 activating enzyme E1 subunit 1; amyloid beta precursor protein binding protein 1, amyloid beta precursor protein binding protein 1, 59kDa, amyloid beta precursor protein binding protein 1, 59kD, APPBP1; NEDD8-activating enzyme E1 regulatory subunit; NEDD8 activating enzyme E1 subunit; ula 1; APP-BP1; protooncogene protein 1; proto-oncogene protein 1; amyloid protein-binding protein 1; NEDD8-activating enzyme E1 subunit; amyloid beta precursor protein-binding protein 1, 59kD; amyloid beta precursor protein binding protein 1, 59kDa; amyloid beta precursor protein-binding protein 1, 59 kDa; HPP1; ula-1; APPBP1; A-116A10.1;

 Tel: 1-631-559-9269 1-516-512-3133

 Email: [info@creative-biomart.com](mailto:info@creative-biomart.com)  Fax: 1-631-938-8127

 45-1 Ramsey Road, Shirley, NY 11967, USA

**Gene ID** 8883

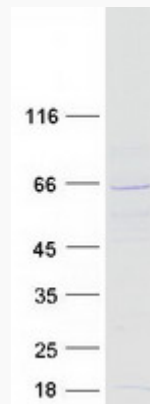
**mRNA Refseq** [NM\\_001018160](#)

**Protein Refseq** [NP\\_001018170](#)

**MIM** 603385

**UniProt ID** [Q13564](#)

**SDS-PAGE**



 Tel: 1-631-559-9269 1-516-512-3133

 Email: [info@creative-biomart.com](mailto:info@creative-biomart.com)  Fax: 1-631-938-8127

 45-1 Ramsey Road, Shirley, NY 11967, USA