

Recombinant Human NAGA Protein, Myc/DDK-tagged, C13 and N15-labeled

Cat. No. NAGA-5419H **Lot. No.** (See product label)

SPECIFICATION

Product Overview	NAGA MS Standard C13 and N15-labeled recombinant protein (NP_000253) with a C-terminal MYC/DDK tag, was expressed in HEK293 cells.
Species	Human
Source	HEK293
Description	NAGA encodes the lysosomal enzyme alpha-N-acetylgalactosaminidase, which cleaves alpha-N-acetylgalactosaminyl moieties from glycoconjugates. Mutations in NAGA have been identified as the cause of Schindler disease types I and II (type II also known as Kanzaki disease).
Molecular Mass	46.6 kDa
AA Sequence	<pre> MLLKTVLLLGHVAQVLM LDNGLLQTPPMGWLAWERFRCNINCD EDPKNCISEQLFM EMADRMAQDGWRDMGYTYLNIDDCWIGGRDASGRLMPDKRFPHGIPFLADYVHS LGLKLG IYADMGNFTCMGYPGTTLDKVVQDAQTF AEWKVDMLKLDGCFSTPEERA QGYPKMAAALNATGRPIAFSCSWPAYEGGLPPRVNYSLLADICNLWRNYDDIQDSW WSVLSILNWFVEHQDILQPVAGPGHWNDPDM LLIGNFGLSLEQSRAQMALWTVLAA PLLMSD LRTISAQNMDILQNPLMIKINQDPLGIQGRRIHKEKSLIEVYMRPLSNKASA LVFFSCRTDMPYRYHSSLGQLNFTG SVIYEAQDVYSGDIISGLRDET NFTVIINPSGV VMWYLYPIKNLEMSQQTRTRPLEQKLISEEDLAANDILDYKDDDDKV </pre>
Purity	> 80% as determined by SDS-PAGE and Coomassie blue staining

 Tel: 1-631-559-9269 1-516-512-3133

 Email: info@creative-biomart.com  Fax: 1-631-938-8127

 45-1 Ramsey Road, Shirley, NY 11967, USA

Stability	Stable for 3 months from receipt of products under proper storage and handling conditions.
Storage	Store at -80 centigrade. Avoid repeated freeze-thaw cycles.
Concentration	50 µg/mL as determined by BCA
Storage Buffer	100 mM glycine, 25 mM Tris-HCl, pH 7.3.

GENE INFORMATION

Gene Name	NAGA alpha-N-acetylgalactosaminidase [Homo sapiens (human)]
Official Symbol	NAGA
Synonyms	NAGA; N-acetylgalactosaminidase, alpha-; alpha-N-acetylgalactosaminidase; D22S674; alpha-galactosidase B; Acetylgalactosaminidase, alpha-N- (alpha-galactosidase B); GALB;
Gene ID	4668
mRNA Refseq	NM_000262
Protein Refseq	NP_000253
MIM	104170
UniProt ID	P17050

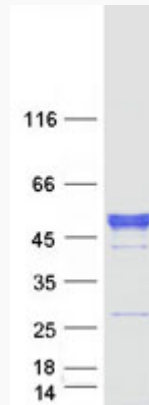
 Tel: 1-631-559-9269 1-516-512-3133

 Email: info@creative-biomart.com  Fax: 1-631-938-8127

 45-1 Ramsey Road, Shirley, NY 11967, USA



SDS-PAGE



Tel: 1-631-559-9269 1-516-512-3133

Email: info@creative-biomart.com Fax: 1-631-938-8127

45-1 Ramsey Road, Shirley, NY 11967, USA