

## Recombinant Human NAGA Protein, His-tagged

Cat. No. NAGA-792H Lot. No. (See product label)

### SPECIFICATION

<b>Product Overview</b>	Recombinant Human NAGA(Leu18~Asp217) fused with His tag at N-terminal was expressed in E. coli.
<b>Species</b>	Human
<b>Source</b>	E.coli
<b>ProteinLength</b>	Leu18~Asp217
<b>Description</b>	NAGA encodes the lysosomal enzyme alpha-N-acetylgalactosaminidase, which cleaves alpha-N-acetylgalactosaminy moieties from glycoconjugates. Mutations in NAGA have been identified as the cause of Schindler disease types I and II (type II also known as Kanzaki disease).
<b>Form</b>	PBS, pH7.4, containing 0.01% SKL, 1mM DTT, 5% Trehalose and Proclin300.
<b>Molecular Mass</b>	24.1kDa
<b>Endotoxin</b>	<1.0EU per 1g (determined by the LAL method)
<b>Purity</b>	> 95%
<b>Applications</b>	Positive Control; Immunogen; SDS-PAGE; WB. If bio-activity of the protein is needed, please check active protein.

 Tel: 1-631-559-9269 1-516-512-3133

 Email: [info@creative-biomart.com](mailto:info@creative-biomart.com)  Fax: 1-631-938-8127

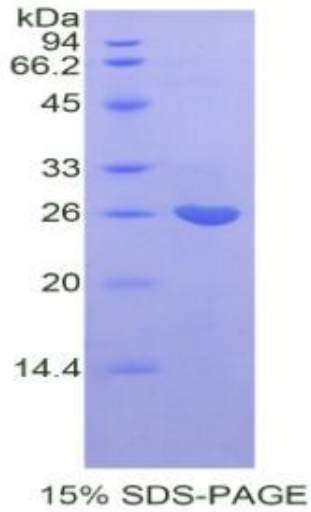
 45-1 Ramsey Road, Shirley, NY 11967, USA

<b>Stability</b>	The thermal stability is described by the loss rate. The loss rate was determined by accelerated thermal degradation test, that is, incubate the protein at 37 centigrade for 48h, and no obvious degradation and precipitation were observed. The loss rate is less than 5% within the expiration date under appropriate storage condition.
<b>Storage</b>	Avoid repeated freeze/thaw cycles. Store at 2-8 centigrade for one month. Aliquot and store at -80 centigrade for 12 months.
<b>Reconstitution</b>	Reconstitute in PBS or others.
<b>GENE INFORMATION</b>	
<b>Gene Name</b>	NAGA N-acetylgalactosaminidase, alpha- [ Homo sapiens ]
<b>Official Symbol</b>	NAGA
<b>Synonyms</b>	NAGA; N-acetylgalactosaminidase, alpha-; alpha-N-acetylgalactosaminidase; D22S674; alpha-galactosidase B; Acetylgalactosaminidase, alpha-N- (alpha-galactosidase B); GALB;
<b>Gene ID</b>	4668
<b>mRNA Refseq</b>	NM_000262
<b>Protein Refseq</b>	NP_000253
<b>MIM</b>	104170
<b>UniProt ID</b>	P17050

 Tel: 1-631-559-9269 1-516-512-3133

 Email: [info@creative-biomart.com](mailto:info@creative-biomart.com)  Fax: 1-631-938-8127

 45-1 Ramsey Road, Shirley, NY 11967, USA



Tel: 1-631-559-9269 1-516-512-3133

Email: [info@creative-biomart.com](mailto:info@creative-biomart.com) Fax: 1-631-938-8127

45-1 Ramsey Road, Shirley, NY 11967, USA