

Recombinant Human NAMPT protein, His&GST-tagged

Cat. No. NAMPT-2531H Lot. No. (See product label)

SPECIFICATION

Product Overview	Recombinant Human NAMPT protein(P43490) (Met 1-His 491 was expressed in Insect Cells, fused with the N-terminal polyhistidine-tagged GST tag at the N-terminus.
Species	Human
Source	Insect Cells
ProteinLength	1-491 aa
Form	Lyophilized from sterile 20mM Tris, 500mM NaCl, pH 8.0, 20% gly, 0.3mM DTT.
Molecular Mass	The recombinant human NAMPT/GST chimera consists of 728 amino acids and has a calculated molecular mass of 83.3 kDa. It migrates as an approximately 75 kDa band in SDS-PAGE under reducing conditions.
Endotoxin	< 1.0 EU per µg of the protein as determined by the LAL method.
Purity	> 90 % as determined by SDS-PAGE
Storage	Store it under sterile conditions at -20°C to -80°C upon receiving. Recommend to aliquot the protein into smaller quantities for optimal storage. Avoid repeated freeze-thaw cycles.
Reconstitution	It is recommended that sterile water be added to the vial to prepare a stock solution of

 Tel: 1-631-559-9269 1-516-512-3133

 Email: info@creative-biomart.com  Fax: 1-631-938-8127

 45-1 Ramsey Road, Shirley, NY 11967, USA

0.2 ug/ul. Centrifuge the vial at 4°C before opening to recover the entire contents.

protein Refseq-Weblink http://www.ncbi.nlm.nih.gov/protein/NP_005737.1

Unit ID P43490

Unit ID-Weblink <http://www.uniprot.org/uniprot/P43490>

GENE INFORMATION

Gene Name [NAMPT nicotinamide phosphoribosyltransferase \[Homo sapiens \]](#)

Official Symbol [NAMPT](#)

Synonyms NAMPT; nicotinamide phosphoribosyltransferase; PBEF1, pre B cell colony enhancing factor 1; PBEF; visfatin; NAMPRtase; pre-B cell-enhancing factor; pre-B-cell colony enhancing factor 1; pre-B-cell colony-enhancing factor 1; VF; PBEF1; VISFATIN; 1110035O14Rik; MGC117256; DKFZp666B131;

Gene ID [10135](#)

mRNA Refseq [NM_005746](#)

protein Refseq [NP_005737](#)

MIM [608764](#)

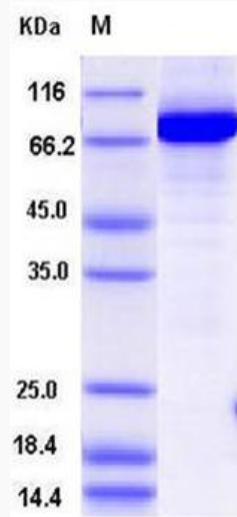
 Tel: 1-631-559-9269 1-516-512-3133

 Email: info@creative-biomart.com  Fax: 1-631-938-8127

 45-1 Ramsey Road, Shirley, NY 11967, USA



SDS-PAGE



Tel: 1-631-559-9269 1-516-512-3133

Email: info@creative-biomart.com Fax: 1-631-938-8127

45-1 Ramsey Road, Shirley, NY 11967, USA