

## Recombinant Human NAPEPLD Protein, Myc/DDK-tagged, C13 and N15-labeled

Cat. No. NAPEPLD-1324H Lot. No. (See product label)

### SPECIFICATION

<b>Product Overview</b>	NAPEPLD MS Standard C13 and N15-labeled recombinant protein (NP_001116310) with a C-terminal MYC/DDK tag, was expressed in HEK293 cells.
<b>Species</b>	Human
<b>Source</b>	HEK293
<b>Description</b>	NAPEPLD is a phospholipase D type enzyme that catalyzes the release of N-acylethanolamine (NAE) from N-acyl-phosphatidylethanolamine (NAPE) in the second step of the biosynthesis of N-acylethanolamine.
<b>Molecular Mass</b>	45.4 kDa
<b>AA Sequence</b>	MDENESNQSLMTSSQYPKEAVRKRQNSARNSGASDSSRFSRKSFKLDYRLEEDVT KSKKGGKDGFRVNPWPTWKNPSIPNVLRLIMEKDHSSVPSSKEELDKELPVLKPYFI TNPEEAGVREAGLRVTWLGHATVMVEMDELIFLTDPIFSSRASPSQYMGPKRFRRS PCTISELPPIDAVLISHNHYDHLDYNVIALNERFGNELRWFVPLGLLDWMQKCGCE NVIELDWWEENCVPGHDKVTFVFTPSQHWCKRTLMDDNKVLWGSWSVLGPWNR FFAGDTGYCPAFEEIGKRFGPFDLAAIPIGAYEPRWFMKYQHVDPEEAVRIHTDVQT KKSMAIHWGTFALANEHYLEPPVKLNEALERYGLNAEDFFVLKHGESRYLNDDEN FTRTRPLEQKLISEEDLAANDILDYKDDDDKV
<b>Purity</b>	> 80% as determined by SDS-PAGE and Coomassie blue staining

 Tel: 1-631-559-9269 1-516-512-3133

 Email: [info@creative-biomart.com](mailto:info@creative-biomart.com)  Fax: 1-631-938-8127

 45-1 Ramsey Road, Shirley, NY 11967, USA

<b>Stability</b>	Stable for 3 months from receipt of products under proper storage and handling conditions.
<b>Storage</b>	Store at -80 centigrade. Avoid repeated freeze-thaw cycles.
<b>Concentration</b>	50 µg/mL as determined by BCA
<b>Storage Buffer</b>	100 mM glycine, 25 mM Tris-HCl, pH 7.3.

## GENE INFORMATION

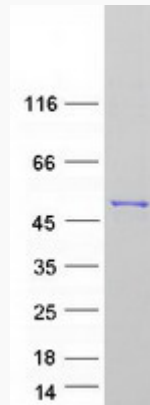
<b>Gene Name</b>	NAPEPLD N-acyl phosphatidylethanolamine phospholipase D [ Homo sapiens (human) ]
<b>Official Symbol</b>	NAPEPLD
<b>Synonyms</b>	NAPEPLD; N-acyl phosphatidylethanolamine phospholipase D; N-acyl-phosphatidylethanolamine-hydrolyzing phospholipase D; C7orf18; chromosome 7 open reading frame 18; N acyl phosphatidylethanolamine hydrolyzing phospholipase D; FMP30; NAPE PLD; NAPE-hydrolyzing phospholipase D; NAPE-PLD; DKFZp781D1098;
<b>Gene ID</b>	222236
<b>mRNA Refseq</b>	NM_001122838
<b>Protein Refseq</b>	NP_001116310
<b>MIM</b>	612334
<b>UniProt ID</b>	Q6IQ20

 Tel: 1-631-559-9269 1-516-512-3133

 Email: [info@creative-biomart.com](mailto:info@creative-biomart.com)  Fax: 1-631-938-8127

 45-1 Ramsey Road, Shirley, NY 11967, USA

**SDS-PAGE**



 Tel: 1-631-559-9269 1-516-512-3133

 Email: [info@creative-biomart.com](mailto:info@creative-biomart.com)  Fax: 1-631-938-8127

 45-1 Ramsey Road, Shirley, NY 11967, USA