

Recombinant Full Length Human NAPEPLD Protein, C-Flag-tagged

Cat. No. NAPEPLD-1799HFL **Lot. No.** (See product label)

SPECIFICATION

Product Overview

Recombinant Full Length Human NAPEPLD Protein, fused to Flag-tag at C-terminus, was expressed in Mammalian cells.

Species

Human

Source

Mammalian Cells

Description

NAPEPLD is a phospholipase D type enzyme that catalyzes the release of N-acylethanolamine (NAE) from N-acyl-phosphatidylethanolamine (NAPE) in the second step of the biosynthesis of N-acylethanolamine.

Form

25 mM Tris HCl, pH 7.3, 100 mM glycine, 10% glycerol.

Molecular Mass

45.4 kDa

AA Sequence

MDENESNQSLMTSSQYPKEAVRKRQNSARNSGASDSSRFSRKSFKLDYRLEEDVT
 KSKKGGKDRFVNPWP TWKNPSIPNVLRWLIMEKDHSSVPSSKEELDKELPVLPYPF
 ITNPEEAGVREAGLRVTWLGHATVMVEMD ELIFLTDPIFSSRASPSQYMGPKRFRR
 SPCTISELPPIDAVLISHNHYDHLDYNSVIALNERFGNELRWF VPLGLLDWMQKCGC
 ENVIELDWWEEENCVPGHDKVTFVFTPSQHWCKRTLMDDNKVLWGSWSVLGPWNR
 FF FAGDTGYCPAFEEIGKRFGPFDLAAIPIGAYEPRWFMKYQHVDPEEAVRIHTDVQ
 TKKSMAIHWGTFALA NEHYLEPPVKLNEALERYGLNAEDFFVLKHGESRYLNNNDE
 NF TRTRPLEQKLISEEDLAANDILDYKDDDDKV

 Tel: 1-631-559-9269 1-516-512-3133

 Email: info@creative-biomart.com  Fax: 1-631-938-8127

 45-1 Ramsey Road, Shirley, NY 11967, USA

Purity	> 80% as determined by SDS-PAGE and Coomassie blue staining.
Stability	Stable for 12 months from the date of receipt of the product under proper storage and handling conditions. Avoid repeated freeze-thaw cycles.
Storage	Store at -80 centigrade.
Concentration	>50 ug/mL as determined by microplate BCA method.
Preparation	Recombinant protein was captured through anti-DDK affinity column followed by conventional chromatography steps.
Full Length	Full L.

GENE INFORMATION

Gene Name	NAPEPLD N-acyl phosphatidylethanolamine phospholipase D [Homo sapiens (human)]
Official Symbol	NAPEPLD
Synonyms	FMP30; C7orf18; NAPE-PLD
Gene ID	222236
mRNA Refseq	NM_198990.6
Protein Refseq	NP_945341.3
MIM	612334

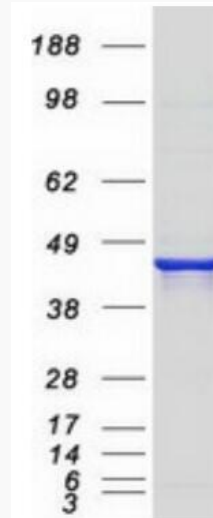
 Tel: 1-631-559-9269 1-516-512-3133

 Email: info@creative-biomart.com  Fax: 1-631-938-8127

 45-1 Ramsey Road, Shirley, NY 11967, USA

UniProt ID

Q6IQ20



Coomassie blue staining of purified NAPEPLD protein.

 Tel: 1-631-559-9269 1-516-512-3133

 Email: info@creative-biomart.com  Fax: 1-631-938-8127

 45-1 Ramsey Road, Shirley, NY 11967, USA