

Recombinant Human NAPEPLD Protein, Myc/DDK-tagged, C13 and N15-labeled

Cat. No. NAPEPLD-2118H Lot. No. (See product label)

SPECIFICATION

| | |
|-------------------------|--------------------------------------------------------------------------------------------------------------------------------------------------------------------------------------------------------------------------------------------------------------------------------------------------------------------------------------------------------------------------------------------------------------------------------------------------------------------|
| Product Overview | NAPEPLD MS Standard C13 and N15-labeled recombinant protein (NP_945341) with a C-terminal MYC/DDK tag, was expressed in HEK293 cells. |
| Species | Human |
| Source | HEK293 |
| Description | NAPEPLD is a phospholipase D type enzyme that catalyzes the release of N-acylethanolamine (NAE) from N-acyl-phosphatidylethanolamine (NAPE) in the second step of the biosynthesis of N-acylethanolamine. |
| Molecular Mass | 45.6 kDa |
| AA Sequence | MDENESNQSLMTSSQYPKEAVRKRQNSARNSGASDSSRFSRKSFKLDYRLEEDVT KSKKKGKDGFRVNPWPTWKNPSIPNVLRLIMEKDHSSVPSSKEELDKELPVLKPYFI TNPEEAGVREAGLRVTWLGHATVMVEMDELIFLTDPIFSSRASPSQYMGPKRFRRS PCTISELPPIDAVLISHNHYDHLDYNVIALNERFGNELRWFVPLGLLDWMQKCGCE NVIELDWWEENCVPGHDKVTFVFTPSQHWCKRTLMDDNKVLWGSWSVLGPWNR FFAGDTGYCPAFEEIGKRFGPFDLAAIPIGAYEPRWFMKYQHVDPEEAVRIHTDVQT KKSMAIHWGTFALANEHYLEPPVKLNEALERYGLNAEDFFVLKHGESRYLNNNDEN FTRTRPLEQKLISEEDLAANDILDYKDDDDKV |
| Purity | > 80% as determined by SDS-PAGE and Coomassie blue staining |

 Tel: 1-631-559-9269 1-516-512-3133

 Email: info@creative-biomart.com  Fax: 1-631-938-8127

 45-1 Ramsey Road, Shirley, NY 11967, USA

| | |
|-----------------------|--------------------------------------------------------------------------------------------|
| Stability | Stable for 3 months from receipt of products under proper storage and handling conditions. |
| Storage | Store at -80 centigrade. Avoid repeated freeze-thaw cycles. |
| Concentration | 50 µg/mL as determined by BCA |
| Storage Buffer | 100 mM glycine, 25 mM Tris-HCl, pH 7.3. |

GENE INFORMATION

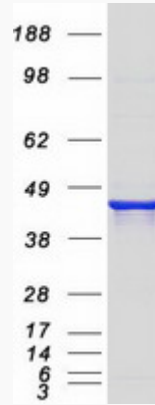
| | |
|------------------------|--------------------------------------------------------------------------------------------------------------------------------------------------------------------------------------------------------------------------------------------------------------------------------------------------------------|
| Gene Name | NAPEPLD N-acyl phosphatidylethanolamine phospholipase D [Homo sapiens (human)] |
| Official Symbol | NAPEPLD |
| Synonyms | NAPEPLD; N-acyl phosphatidylethanolamine phospholipase D; N-acyl-phosphatidylethanolamine-hydrolyzing phospholipase D; C7orf18; chromosome 7 open reading frame 18; N acyl phosphatidylethanolamine hydrolyzing phospholipase D; FMP30; NAPE PLD; NAPE-hydrolyzing phospholipase D; NAPE-PLD; DKFZp781D1098; |
| Gene ID | 222236 |
| mRNA Refseq | NM_198990 |
| Protein Refseq | NP_945341 |
| MIM | 612334 |
| UniProt ID | Q6IQ20 |

 Tel: 1-631-559-9269 1-516-512-3133

 Email: info@creative-biomart.com  Fax: 1-631-938-8127

 45-1 Ramsey Road, Shirley, NY 11967, USA

SDS-PAGE



 Tel: 1-631-559-9269 1-516-512-3133

 Email: info@creative-biomart.com  Fax: 1-631-938-8127

 45-1 Ramsey Road, Shirley, NY 11967, USA