

# Recombinant Human NAPG Protein, Myc/DDK-tagged, C13 and N15-labeled

**Cat. No.** NAPG-744H    **Lot. No.** (See product label)

## SPECIFICATION

<b>Product Overview</b>	NAPG MS Standard C13 and N15-labeled recombinant protein (NP_003817) with a C-terminal MYC/DDK tag, was expressed in HEK293 cells.
<b>Species</b>	Human
<b>Source</b>	HEK293
<b>Description</b>	This gene encodes soluble NSF attachment protein gamma. The soluble NSF attachment proteins (SNAPs) enable N-ethyl-maleimide-sensitive fusion protein (NSF) to bind to target membranes. NSF and SNAPs appear to be general components of the intracellular membrane fusion apparatus, and their action at specific sites of fusion must be controlled by SNAP receptors particular to the membranes being fused. The product of this gene mediates platelet exocytosis and controls the membrane fusion events of this process.
<b>Molecular Mass</b>	34.7 kDa
<b>AA Sequence</b>	MAAQKINEGLEHLAKAEKYLKTGFLKWKPDYDSAASEYGKAAVAFKNAKQFEQAKD ACLREAVAHENNRALFHAAKAYEQAGMMLKEMQKLPEAVQLIEKASMMYLENGTP DTAAMALERAGKLIENVDPKAVQLYQQTANVFENDERLRQAVELLGKASRLLVRG RRFDEAALSQKEKNIYKEIENYPTCYKKTIAQVLVHLHRNDYVAAERCVRESYSIPGF NGSEDCAALEQLLEGYDQQDQDQVSDVCNSPLFKYMDNDYAKLGLSLVPPGGGIK KKSPATPQAKPDGVTATAADEEEDEYSGGLCTRTRPLEQKLISEEDLAANDILDYKD

 Tel: 1-631-559-9269    1-516-512-3133

 Email: [info@creative-biomart.com](mailto:info@creative-biomart.com)     Fax: 1-631-938-8127

 45-1 Ramsey Road, Shirley, NY 11967, USA

	DDDKV
<b>Purity</b>	> 80% as determined by SDS-PAGE and Coomassie blue staining
<b>Stability</b>	Stable for 3 months from receipt of products under proper storage and handling conditions.
<b>Storage</b>	Store at -80 centigrade. Avoid repeated freeze-thaw cycles.
<b>Concentration</b>	50 µg/mL as determined by BCA
<b>Storage Buffer</b>	100 mM glycine, 25 mM Tris-HCl, pH 7.3.
<b>GENE INFORMATION</b>	
<b>Gene Name</b>	NAPG NSF attachment protein gamma [ Homo sapiens (human) ]
<b>Official Symbol</b>	NAPG
<b>Synonyms</b>	NAPG; N-ethylmaleimide-sensitive factor attachment protein, gamma; gamma-soluble NSF attachment protein; gamma SNAP; SNAP-gamma; soluble NSF attachment protein; GAMMASNAP;
<b>Gene ID</b>	8774
<b>mRNA Refseq</b>	NM_003826
<b>Protein Refseq</b>	NP_003817
<b>MIM</b>	603216

 Tel: 1-631-559-9269 1-516-512-3133

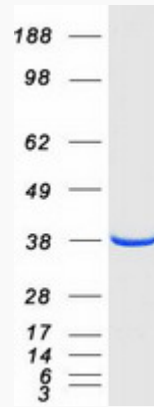
 Email: [info@creative-biomart.com](mailto:info@creative-biomart.com)  Fax: 1-631-938-8127

 45-1 Ramsey Road, Shirley, NY 11967, USA

UniProt ID

Q99747

SDS-PAGE



 Tel: 1-631-559-9269 1-516-512-3133

 Email: [info@creative-biomart.com](mailto:info@creative-biomart.com)  Fax: 1-631-938-8127

 45-1 Ramsey Road, Shirley, NY 11967, USA