

Recombinant Human NAT1 Protein, His-tagged

Cat. No. NAT1-2478H **Lot. No.** (See product label)

SPECIFICATION

Product Overview	Recombinant Human NAT1 Protein (Asp20-Val280) with a N-His tag was expressed in E. coli.
Species	Human
Source	E.coli
ProteinLength	Asp20-Val280
Description	This gene is one of two arylamine N-acetyltransferase (NAT) genes in the human genome, and is orthologous to the mouse and rat Nat2 genes. The enzyme encoded by this gene catalyzes the transfer of an acetyl group from acetyl-CoA to various arylamine and hydrazine substrates. This enzyme helps metabolize drugs and other xenobiotics, and functions in folate catabolism. Multiple transcript variants encoding different isoforms have been found for this gene.
Form	Freeze-dried powder
Molecular Mass	Predicted Molecular Mass: 34.1 kDa Accurate Molecular Mass: 35 kDa
Endotoxin	<1.0 EU per 1g (determined by the LAL method).
Purity	> 90%

 Tel: 1-631-559-9269 1-516-512-3133

 Email: info@creative-biomart.com  Fax: 1-631-938-8127

 45-1 Ramsey Road, Shirley, NY 11967, USA

Applications	Positive Control; Immunogen; SDS-PAGE; WB.
Stability	The thermal stability is described by the loss rate. The loss rate was determined by accelerated thermal degradation test, that is, incubate the protein at 37 centigrade for 48h, and no obvious degradation and precipitation were observed. The loss rate is less than 5% within the expiration date under appropriate storage condition.
Storage	Avoid repeated freeze/thaw cycles. Store at 2-8 centigrade for one month. Aliquot and store at -80 centigrade for 12 months.
Storage Buffer	20mM Tris, 150mM NaCl, pH8.0, containing 1mM EDTA, 1mM DTT, 0.01% SKL, 5% Trehalose and Proclin300.
Reconstitution	Reconstitute in 20mM Tris, 150mM NaCl (pH8.0) to a concentration of 0.1-1.0 mg/mL. Do not vortex.

GENE INFORMATION

Gene Name	NAT1 N-acetyltransferase 1 (arylamine N-acetyltransferase) [Homo sapiens (human)]
Official Symbol	NAT1
Synonyms	NAT1; N-acetyltransferase 1 (arylamine N-acetyltransferase); AAC1; arylamine N-acetyltransferase 1; arylamide acetylase 1; N-acetyltransferase type 1; monomorphic arylamine N-acetyltransferase; MNAT; NATI; NAT-1;
Gene ID	9
mRNA Refseq	NM_000662

 Tel: 1-631-559-9269 1-516-512-3133

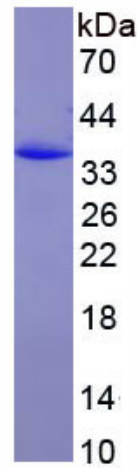
 Email: info@creative-biomart.com  Fax: 1-631-938-8127

 45-1 Ramsey Road, Shirley, NY 11967, USA

Protein Refseq NP_000653

MIM 108345

UniProt ID P18440



 Tel: 1-631-559-9269 1-516-512-3133

 Email: info@creative-biomart.com  Fax: 1-631-938-8127

 45-1 Ramsey Road, Shirley, NY 11967, USA