

## Recombinant Human NAT14 Protein, GST-tagged

Cat. No. NAT14-4923H Lot. No. (See product label)

### SPECIFICATION

<b>Product Overview</b>	Human KLP1 full-length ORF ( NP_065111.1, 1 a.a. - 206 a.a.) recombinant protein with GST-tag at N-terminal.
<b>Species</b>	Human
<b>Source</b>	Wheat Germ
<b>Description</b>	NAT14 (N-Acetyltransferase 14 (Putative)) is a Protein Coding gene. Among its related pathways are Cytochrome P450 - arranged by substrate type. GO annotations related to this gene include N-acetyltransferase activity.
<b>Molecular Mass</b>	48.1 kDa
<b>AA Sequence</b>	MAPSHLSVREMREDEKPLVLEMLKAGVKDTENRVALHALTRPPALLLLAAASSGLRF VLASFALALLLPVFLAVAAVKLGLRARWGSLPPPGLGGPWVAVRGSGDVCGVLAL APGTNAGDGARVTRLSVSRWHRRRGVGRLLAFAEARARAWAGGMGEPRARLVV PVAVAAWGVGGMLEGCGYQAEGGWGCLGYTLVREFSKDL
<b>Applications</b>	Enzyme-linked Immunoabsorbent Assay Western Blot (Recombinant protein) Antibody Production Protein Array
<b>Notes</b>	Best use within three months from the date of receipt of this protein.

 Tel: 1-631-559-9269 1-516-512-3133

 Email: [info@creative-biomart.com](mailto:info@creative-biomart.com)  Fax: 1-631-938-8127

 45-1 Ramsey Road, Shirley, NY 11967, USA

**Storage** Store at -80 centigrade. Aliquot to avoid repeated freezing and thawing.

**Storage Buffer** 50 mM Tris-HCl, 10 mM reduced Glutathione, pH=8.0 in the elution buffer.

## GENE INFORMATION

**Gene Name** NAT14 N-acetyltransferase 14 (GCN5-related, putative) [ Homo sapiens ]

**Official Symbol** NAT14

**Synonyms** NAT14; N-acetyltransferase 14 (GCN5-related, putative); N acetyltransferase 14; N-acetyltransferase 14; K562 cells derived leucine zipper like protein 1; KLP1; K562 cell-derived leucine-zipper-like protein 1; K562 cells-derived leucine zipper-like protein 1; K562 cells-derived leucine-zipper-like protein 1;

**Gene ID** 57106

**mRNA Refseq** NM\_020378

**Protein Refseq** NP\_065111

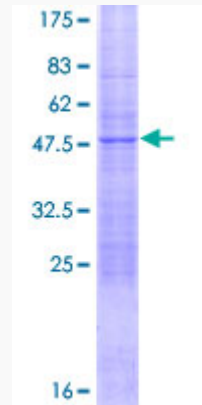
**UniProt ID** Q8WUY8

 Tel: 1-631-559-9269 1-516-512-3133

 Email: [info@creative-biomart.com](mailto:info@creative-biomart.com)  Fax: 1-631-938-8127

 45-1 Ramsey Road, Shirley, NY 11967, USA

**Quality Control  
Testing**



12.5% SDS-PAGE Stained with Coomassie Blue

 Tel: 1-631-559-9269 1-516-512-3133

 Email: [info@creative-biomart.com](mailto:info@creative-biomart.com)  Fax: 1-631-938-8127

 45-1 Ramsey Road, Shirley, NY 11967, USA