

Recombinant Human NAT2 Protein (1-290 aa), His-SUMO-tagged

Cat. No. NAT2-2061H **Lot. No.** (See product label)

SPECIFICATION

Product Overview Recombinant Human NAT2 Protein (1-290 aa) is produced by E. coli expression system. This protein is fused with a 6xHis-SUMO tag at the N-terminal. Research Area: Signal Transduction. Protein Description: Full Length.

Species Human

Source E.coli

ProteinLength 1-290 aa

Description Participates in the detoxification of a plethora of hydrazine and arylamine drugs. Catalyzes the N- or O-acetylation of various arylamine and heterocyclic amine substrates and is able to bioactivate several known carcinogens.


Form Tris-based buffer,50% glycerol

Molecular Mass 49.5 kDa

AA Sequence MDIEAYFERIGYKNSRNKLDLETLDILEHQIRAVPFENLNMHCGQAMELGLEAIFDHI
VRRNRGGWCLQVNQLLYWALTTIGFQTTMLGGYFYIPPVVKYSTGMVHLLLQVTID
GRNYIVDAGSGSSSQMWQPLELISGKDQPQVPCIFCLTEERGIWYLDQIRREQYITN
KEFLNSHLLPKKKHQKIYLFLEPRTIEDFESMNTYLQTSPTSSFITTSFCSLQTPEGV
YCLVGFILTYRKFNKYDNTDLVEFKLTTEEEVEEVLKNIFKISLGRNLVPKPGDGSULTI

 Tel: 1-631-559-9269 1-516-512-3133

 Email: info@creative-biomart.com  Fax: 1-631-938-8127

 45-1 Ramsey Road, Shirley, NY 11967, USA

Purity	> 90% as determined by SDS-PAGE.
Notes	Repeated freezing and thawing is not recommended. Store working aliquots at 4 centigrade for up to one week.
Storage	The shelf life is related to many factors, storage state, buffer ingredients, storage temperature and the stability of the protein itself. Generally, the shelf life of liquid form is 6 months at -20 centigrade/-80 centigrade. The shelf life of lyophilized form is 12 months at -20 centigrade/-80 centigrade.
Concentration	A hardcopy of COA with reconstitution instruction is sent along with the products.

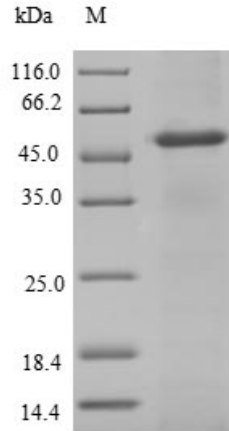
GENE INFORMATION

Gene Name	NAT2 N-acetyltransferase 2 (arylamine N-acetyltransferase) [Homo sapiens]
Official Symbol	NAT2
Synonyms	NAT2; AAC2; N-acetyltransferase type 2; PNAT; NAT-2;
Gene ID	10
mRNA Refseq	NM_000015
Protein Refseq	NP_000006
MIM	612182
UniProt ID	P11245

 Tel: 1-631-559-9269 1-516-512-3133

 Email: info@creative-biomart.com  Fax: 1-631-938-8127

 45-1 Ramsey Road, Shirley, NY 11967, USA



(Tris-Glycine gel) Discontinuous SDS-PAGE (reduced) with 5% enrichment gel and 15% separation gel.

 Tel: 1-631-559-9269 1-516-512-3133

 Email: info@creative-biomart.com  Fax: 1-631-938-8127

 45-1 Ramsey Road, Shirley, NY 11967, USA