

# Recombinant Full Length Human NAT2 Protein, N-His-tagged

**Cat. No.** NAT2-35HFL    **Lot. No.** (See product label)

## SPECIFICATION

<b>Product Overview</b>	Recombinant Full Length Human NAT2 Protein, fused to His-tag at N-terminus, was expressed in E. coli.
<b>Species</b>	Human
<b>Source</b>	E.coli
<b>Description</b>	This gene encodes an enzyme that functions to both activate and deactivate arylamine and hydrazine drugs and carcinogens. Polymorphisms in this gene are responsible for the N-acetylation polymorphism in which human populations segregate into rapid, intermediate, and slow acetylator phenotypes. Polymorphisms in this gene are also associated with higher incidences of cancer and drug toxicity. A second polymorphic arylamine N-acetyltransferase gene (NAT1), is located near this gene (NAT2).
<b>Form</b>	50 mM Tris-HCl, pH 8.0, 8 M urea.
<b>Molecular Mass</b>	33.4 kDa
<b>AA Sequence</b>	MDIEAYFERIGYKNSRNKLDLETLDILEHQIRAVPFENLNMHCGQAMELGLEAIFDHI VRRNRGGWCLQVNQLLYWALTTIGFQTTMLGGYFYIPPVVKYSTGMVHLLLQVTD GRNYIVDAGSGSSSQMWQPLELISGKDQPQVPCIFCLTEERGIWYLDQIRREQYITN KEFLNSHLLPKKKHQKIYLFTELEPRTIEDFESMNTYLQTSPTSSFITTSFCSLQTPEGV YCLVGFILTYRKFNKYDNTDLVEFKLTTEEEVEEVLRNIFKISLGRNLVPKPGDGSITI

 Tel: 1-631-559-9269    1-516-512-3133

 Email: [info@creative-biomart.com](mailto:info@creative-biomart.com)     Fax: 1-631-938-8127

 45-1 Ramsey Road, Shirley, NY 11967, USA

<b>Purity</b>	> 80% as determined by SDS-PAGE and Coomassie blue staining.
<b>Notes</b>	For testing in cell culture applications, please filter before use. Note that you may experience some loss of protein during the filtration process.
<b>Stability</b>	Stable for 12 months from the date of receipt of the product under proper storage and handling conditions. Avoid repeated freeze-thaw cycles.
<b>Storage</b>	Store at -80 centigrade.
<b>Concentration</b>	>50 ug/mL as determined by microplate BCA method.
<b>Protein Families</b>	Transmembrane
<b>Protein Pathways</b>	Caffeine metabolism, Drug metabolism - other enzymes, Metabolic pathways
<b>Full Length</b>	Full L.

## GENE INFORMATION

<b>Gene Name</b>	NAT2 N-acetyltransferase 2 [ Homo sapiens (human) ]
<b>Official Symbol</b>	NAT2
<b>Synonyms</b>	AAC2; PNAT; NAT-2
<b>Gene ID</b>	10
<b>mRNA Refseq</b>	NM_000015.3
<b>Protein Refseq</b>	NP_000006.2

 Tel: 1-631-559-9269 1-516-512-3133

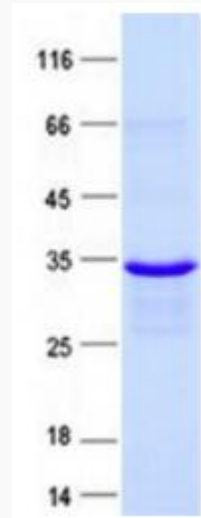
 Email: [info@creative-biomart.com](mailto:info@creative-biomart.com)  Fax: 1-631-938-8127

 45-1 Ramsey Road, Shirley, NY 11967, USA

**MIM** 612182

**UniProt ID** P11245

**SDS-PAGE**



 Tel: 1-631-559-9269 1-516-512-3133

 Email: [info@creative-biomart.com](mailto:info@creative-biomart.com)  Fax: 1-631-938-8127

 45-1 Ramsey Road, Shirley, NY 11967, USA