

## Active Recombinant Rat NAT2 protein, His-GST-tagged

Cat. No. NAT2-406R Lot. No. (See product label)

### SPECIFICATION

<b>Product Overview</b>	Active Recombinant Rat NAT2 protein(P50298)(20-280 aa), fused with N-terminal His tag and GST tag, was expressed in E.coli.
<b>Species</b>	Rat
<b>Source</b>	E.coli
<b>ProteinLength</b>	20-280 aa
<b>Form</b>	PBS, pH7.4, containing 0.01% SKL, 1mM DTT, 5% Trehalose and Proclin300.
<b>Bio-activity</b>	N-Acetyltransferase 2 (NAT2) is an enzyme that plays an important role in metabolism and detoxification of many compounds including drugs and environmental carcinogens through chemical modification of the amine group with an acetyl group. Cytochrome P4502E1 (CYP2E1) and NAT2 are related to chronic obstructive pulmonary disease and CYP2E1 can bind to NAT2. Thus a functional binding ELISA assay was conducted to detect the interaction of recombinant rat NAT2 and recombinant mouse CYP2E1. Briefly, NAT2 was diluted serially in PBS with 0.01% BSA (pH 7.4). Duplicate samples of 100 µl were then transferred to CYP2E1-coated microtiter wells and incubated for 1h at 37°C. Wells were washed with PBST and incubated for 1h with anti-NAT2 pAb, then aspirated and washed 3 times. After incubation with HRP labelled secondary antibody for 1h at 37°C, wells were aspirated and washed 5 times. With the addition of substrate solution, wells were incubated 15-25 minutes at 37°C. Finally, add 50 µ stop solution to the wells and read at 450/630

 Tel: 1-631-559-9269 1-516-512-3133

 Email: [info@creative-biomart.com](mailto:info@creative-biomart.com)  Fax: 1-631-938-8127

 45-1 Ramsey Road, Shirley, NY 11967, USA

nm immediately. The binding activity of recombinant rat NAT2 and recombinant mouse CYP2E1 was shown, the EC50 for this effect is 0.096 ug/mL.

<b>Molecular Mass</b>	60.3kDa
<b>Endotoxin</b>	<1.0EU per 1µg (determined by the LAL method).
<b>Purity</b>	> 90%
<b>Storage</b>	Avoid repeated freeze/thaw cycles. Store at 2-8°C for one month. Store at -20°C for 12 months. Aliquot and store at -80°C for 12 months.
<b>Reconstitution</b>	Reconstitute in 10mM PBS (pH7.4) to a concentration of 0.1-1.0 mg/mL. Do not vortex.

## GENE INFORMATION

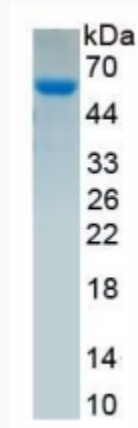
<b>Gene Name</b>	Nat2 N-acetyltransferase 2 [ <i>Rattus norvegicus</i> ]
<b>Official Symbol</b>	NAT2
<b>Synonyms</b>	NAT2; N-acetyltransferase 2; arylamine N-acetyltransferase 2; AT-2; NAT-2; arylamide acetylase 2; N-acetyltransferase type 2; N-Acetyltransferase-2 (arylamine N-acetyltransferase); N-acetyltransferase 2 (arylamine N-acetyltransferase); Nat2a;
<b>Gene ID</b>	116632
<b>mRNA Refseq</b>	NM_053854
<b>Protein Refseq</b>	NP_446306

 Tel: 1-631-559-9269 1-516-512-3133

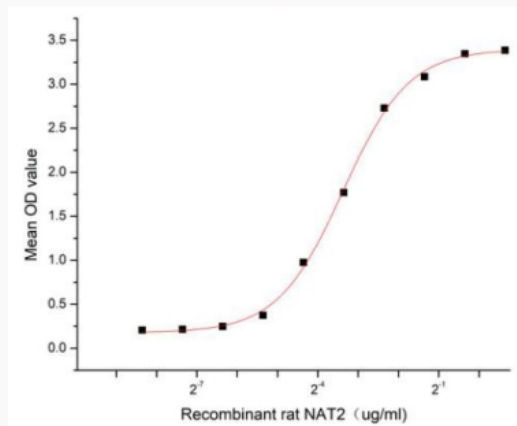
 Email: [info@creative-biomart.com](mailto:info@creative-biomart.com)  Fax: 1-631-938-8127

 45-1 Ramsey Road, Shirley, NY 11967, USA

**SDS-PAGE**



**Activity**



 Tel: 1-631-559-9269 1-516-512-3133

 Email: [info@creative-biomart.com](mailto:info@creative-biomart.com)  Fax: 1-631-938-8127

 45-1 Ramsey Road, Shirley, NY 11967, USA