

Recombinant Human NAV1 protein, His-tagged

Cat. No. NAV1-1198H Lot. No. (See product label)

SPECIFICATION

Product Overview	Recombinant Human NAV1 protein(1359-1530 aa), fused with N-terminal His tag, was expressed in E.coli.
Species	Human
Source	E.coli
ProteinLength	1359-1530 aa
Form	The purified protein was lyophilized from sterile phosphate-buffered saline (PBS: 58 mM Na ₂ HPO ₄ , 17 mM NaH ₂ PO ₄ , 68 mM NaCl, pH 7.4). Prior to lyophilization, 5% (w/v) trehalose and 5% (w/v) mannitol were incorporated as cryoprotective excipients.
AASequence	LKVAPGPSSGSTPGQVPGSSALSSPRRSLGLALTHSFGPSLADTDLSPMDGISTCG PKEEVTLRVVVRMPPQHIIKGDLLKQEQEFFLGCSKVSGKVDWKMLDEAVFQVFKDYIS KMDPASTLGLSTESIHGYSISHVKRVLDAEPPMPPCRRGVNNISVSLKGLKEKCVD SL
Purity	85%, by SDS-PAGE with Coomassie Brilliant Blue staining.
Storage	Store at 2-8°C for 1-2 weeks. Aliquot and store at -20°C to -80°C for up to 3 months, reconstitution with sterile water and addition of an equal volume of glycerol. Avoid repeat freeze-thaw cycles.

 Tel: 1-631-559-9269 1-516-512-3133

 Email: info@creative-biomart.com  Fax: 1-631-938-8127

 45-1 Ramsey Road, Shirley, NY 11967, USA

Reconstitution

Dissolve the product in 200 µl sterile water to achieve a working concentration of 0.25 g/µl. If experimental compatibility allows, mix the aqueous solution with an equal volume of glycerol (1:1 ratio) after initial reconstitution.

GENE INFORMATION**Gene Name**

NAV1 neuron navigator 1 [Homo sapiens]

Official Symbol

NAV1

Synonyms

NAV1; neuron navigator 1; DKFZp781D0314; FLJ12560; FLJ14203; KIAA1151; MGC14961; POMFIL3; pore membrane and/or filament interacting like protein 3; steerin 1; unc-53 homolog 1; neuron navigator-1; pore membrane and/or filament-interacting-like protein 3; UNC53H1; STEERIN1;

Gene ID

89796

mRNA Refseq

NM_001167738

Protein Refseq


NP_001161210

MIM

611628

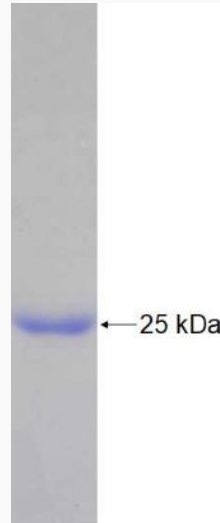
UniProt ID

Q8NEY1

 Tel: 1-631-559-9269 1-516-512-3133 Email: info@creative-biomart.com  Fax: 1-631-938-8127 45-1 Ramsey Road, Shirley, NY 11967, USA



SDS-PAGE



Tel: 1-631-559-9269 1-516-512-3133

Email: info@creative-biomart.com Fax: 1-631-938-8127

45-1 Ramsey Road, Shirley, NY 11967, USA