

Whole Blood NCAM1 protein-coupled magnetic MicroBeads

Cat. No. NCAM1-0868M Lot. No. (See product label)

SPECIFICATION

Species Human

Capacity for 40 mL whole blood

Background

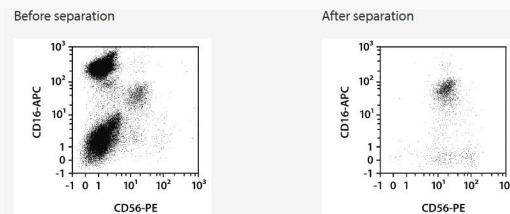
StraightFrom Whole Blood CD56 MicroBeads were developed for the rapid positive selection of CD56+ cells directly from whole blood or bone marrow, minimizing hands-on time and maximizing yield of target cells. No sample preparation is required, including density gradient centrifugation or erythrocyte lysis.

StraightFrom Whole Blood MicroBeads in combination with the autoMACS Pro Separator allow standardization of the cell separation procedure and safe handling of hazardous samples.

Application

CD56+ cells isolated using StraightFrom Whole Blood CD56 MicroBeads are ideally suited for further flow cytometric, functional, or molecular analysis including lineage-specific chimerism analysis after allogeneic stem cell transplantation.

Analysis



Separation of a whole blood sample using the StraightFrom Whole Blood CD56 MicroBeads and the MultiMACS Cell24 Separator Plus with the Single-Column

Tel: 1-631-559-9269 1-516-512-3133

Email: info@creative-biomart.com Fax: 1-631-938-8127

45-1 Ramsey Road, Shirley, NY 11967, USA



Adapter and Whole Blood Columns without washing step after labeling. Cells were fluorescently stained with CD56-PE, CD16-APC, as well as CD45-VioBlue and analyzed by flow cytometry using the MACSQuant Analyzer. Cells were triggered via CD45-VioBlue, cell debris and dead cells were excluded from the analysis based on scatter signals and propidium iodide fluorescence.

 Tel: 1-631-559-9269 1-516-512-3133

 Email: info@creative-biomart.com  Fax: 1-631-938-8127

 45-1 Ramsey Road, Shirley, NY 11967, USA