

Recombinant Human NCAM1 Protein, Myc/DDK-tagged, C13 and N15-labeled

Cat. No. NCAM1-456H **Lot. No.** (See product label)

SPECIFICATION

Product Overview

NCAM1 MS Standard C13 and N15-labeled recombinant protein (NP_851996) with a C-terminal MYC/DDK tag, was expressed in HEK293 cells.

Species

Human

Source

HEK293

Description

This gene encodes a cell adhesion protein which is a member of the immunoglobulin superfamily. The encoded protein is involved in cell-to-cell interactions as well as cell-matrix interactions during development and differentiation. The encoded protein has been shown to be involved in development of the nervous system, and for cells involved in the expansion of T cells and dendritic cells which play an important role in immune surveillance. Alternative splicing results in multiple transcript variants.

Molecular Mass

94.6 kDa

AA Sequence

MLQTKDLIWTLFFLGTAVSLQVDIVPSQGEISVGESKFFLCQVAGDAKDKDISWFSPN
 GEKLTNPQQRISVVWNDSSSTLIYNANIDDAGIYKCVVTGEDGSESEATVNVKIFQ
 KLMFKNAPTPQEFREGEDAVIVCDVVSSLPPTIIWKHKGRDVILKKDVRFIVLSNNYL
 QIRGIKKTDEGTYRCEGRILARGEINFKDIQVIVNVPPTIQRQNVNATANLGQSVTL
 VCDAEGFPEPTMSWTKDGEQIEQEEDDEKYIFSDSSQLTIKKVDKNDEAEYICIAEN
 KAGEQDATIHLKVFAPKITYVENQTAMELEEQVTLTCEASGDPIPSITWRTSTRNISS
 EEKASWTRPEKQETLDGHMVVRSHARVSSLTLKSIQYTDAGEYICTASNTIGQDSQS

 Tel: 1-631-559-9269 1-516-512-3133

 Email: info@creative-biomart.com  Fax: 1-631-938-8127

 45-1 Ramsey Road, Shirley, NY 11967, USA

MYLEVQYAPKLQGPVAVYTWEGNQVNITCEVFAYPSATISWFRDQGQLLPSSNYSNIK
 IYNTPSASYLEVTPDSENDGNYNCTAVNRIGQESLEFILVQADTPSSPSIDQVEPYS
 STAQVQFDEPEATGGVPILKYKAEWRAVGEEVWHSKWYDAKEASMEGIVTIVGLKP
 ETTYAVRLAALNGKGLGEISAASEFKTQPVQGEPSAPKLEGQMGEDGNSIKVNLIKQ
 DDGGSPIRHVLRVYRALSSEWKPEIRLPSGSDHVMLKSLDWNAEYEVYVVAENQQ
 GKSKAAHFVFR TSAQPTAIPANGSPTSGLSTGAIVGILIVIFVLLL VVVDITCYFLNKCG
 LFMCIAVNL CGKAGPGAKGKDMEEGKAAFSKDESKEPIVEVRTEEERTPNHDGGKH
 TEPNETTPLTEPEKGPVEAKPECQETETKPAPAEVKTVPNDATQTKENENKATRTR
 PLEQKLISEEDLAANDILDYKDDDDKV

Purity > 80% as determined by SDS-PAGE and Coomassie blue staining

Stability Stable for 3 months from receipt of products under proper storage and handling conditions.

Storage Store at -80 centigrade. Avoid repeated freeze-thaw cycles.

Concentration 50 µg/mL as determined by BCA

Storage Buffer 100 mM glycine, 25 mM Tris-HCl, pH 7.3.

GENE INFORMATION

Gene Name [NCAM1 neural cell adhesion molecule 1 \[Homo sapiens \(human\) \]](#)

Official Symbol [NCAM1](#)

Synonyms NCAM1; neural cell adhesion molecule 1; CD56; NCAM; neural cell adhesion molecule, NCAM; antigen recognized by monoclonal 5.1H11; MSK39;

Gene ID [4684](#)

 Tel: 1-631-559-9269 1-516-512-3133

 Email: info@creative-biomart.com  Fax: 1-631-938-8127

 45-1 Ramsey Road, Shirley, NY 11967, USA

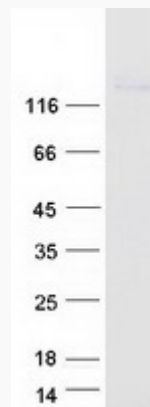
mRNA Refseq [NM_181351](#)

Protein Refseq [NP_851996](#)

MIM [116930](#)

UniProt ID [P13591](#)

SDS-PAGE



 Tel: 1-631-559-9269 1-516-512-3133

 Email: info@creative-biomart.com  Fax: 1-631-938-8127

 45-1 Ramsey Road, Shirley, NY 11967, USA