

Recombinant Human NCAM1 Protein (Leu20-Pro603), C-His tagged

Cat. No. NCAM1-4665H Lot. No. (See product label)

SPECIFICATION

Product Overview	Recombinant human NCAM1 (Leu20-Pro603) fused with the C-terminal His tag was expressed in Mammalian cells.
Species	Human
Source	Mammalian Cells
ProteinLength	Leu20-Pro603
Form	Lyophilized powder/frozen liquid
Molecular Mass	64.24 kDa
Purity	>90% as determined by SDS-PAGE.
Notes	For research use only.
Storage	Use a manual defrost freezer and avoid repeated freeze thaw cycles. Store at 2 to 8 centigrade for one week. Store at -20 to -80 centigrade for twelve months from the date of receipt.
Storage Buffer	Supplied as solution form in PBS or lyophilized from PBS.
Reconstitution	Reconstitute in sterile water for a stock solution.

 Tel: 1-631-559-9269 1-516-512-3133

 Email: info@creative-biomart.com  Fax: 1-631-938-8127

 45-1 Ramsey Road, Shirley, NY 11967, USA

Shipping

They are shipped out with dry ice/blue ice unless customers require otherwise.

GENE INFORMATION**Gene Name**

NCAM1 neural cell adhesion molecule 1 [Homo sapiens (human)]

Official Symbol

NCAM1

Synonyms

NCAM1; neural cell adhesion molecule 1; CD56; NCAM; neural cell adhesion molecule, NCAM; antigen recognized by monoclonal 5.1H11; MSK39;

Gene ID

4684

mRNA Refseq

NM_000615

Protein Refseq

NP_000606

MIM

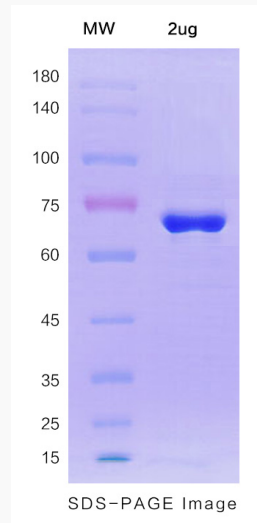
116930

UniProt ID

P13591

 Tel: 1-631-559-9269 1-516-512-3133 Email: info@creative-biomart.com  Fax: 1-631-938-8127 45-1 Ramsey Road, Shirley, NY 11967, USA

SDS-PAGE



 Tel: 1-631-559-9269 1-516-512-3133

 Email: info@creative-biomart.com  Fax: 1-631-938-8127

 45-1 Ramsey Road, Shirley, NY 11967, USA