

## Recombinant Human NCAPD2 Protein, GST-tagged

**Cat. No.** NCAPD2-1550H    **Lot. No.** (See product label)

### SPECIFICATION

<b>Product Overview</b>	Human CNAP1 partial ORF ( AAH28182, 1240 a.a. - 1339 a.a.) recombinant protein with GST-tag at N-terminal.
<b>Species</b>	Human
<b>Source</b>	Wheat Germ
<b>Description</b>	NCAPD2 (Non-SMC Condensin I Complex Subunit D2) is a Protein Coding gene. Among its related pathways are Aurora B signaling and Mitotic Prometaphase. GO annotations related to this gene include binding and histone binding.
<b>Molecular Mass</b>	36.63 kDa
<b>AA Sequence</b>	LRKMLDNFDCFGDKLSDESIFSAFLSVVGKLRRGAKPEGKAIIDFEQKLRACHTRGL DGIKELEIGQAGSQRAPSAKKPSSGSRYSRYQPLASTASDNDFVT
<b>Applications</b>	Enzyme-linked Immunoabsorbent Assay Western Blot (Recombinant protein) Antibody Production Protein Array
<b>Notes</b>	Best use within three months from the date of receipt of this protein.
<b>Storage</b>	Store at -80 centigrade. Aliquot to avoid repeated freezing and thawing.

 Tel: 1-631-559-9269    1-516-512-3133

 Email: [info@creative-biomart.com](mailto:info@creative-biomart.com)     Fax: 1-631-938-8127

 45-1 Ramsey Road, Shirley, NY 11967, USA

**Storage Buffer** 50 mM Tris-HCl, 10 mM reduced Glutathione, pH=8.0 in the elution buffer.

## GENE INFORMATION

**Gene Name** NCAPD2 non-SMC condensin I complex, subunit D2 [ Homo sapiens ]

**Official Symbol** NCAPD2

**Synonyms** NCAPD2; non-SMC condensin I complex, subunit D2; condensin complex subunit 1; CAP D2; chromosome condensation related SMC associated protein 1; CNAP1; hCAP D2; KIAA0159; XCAP-D2 homolog; chromosome-associated protein D2; chromosome condensation-related SMC-associated protein 1; CAP-D2; hCAP-D2;

**Gene ID** 9918

**mRNA Refseq** NM\_014865

**Protein Refseq** NP\_055680

**MIM** 615638

**UniProt ID** Q15021

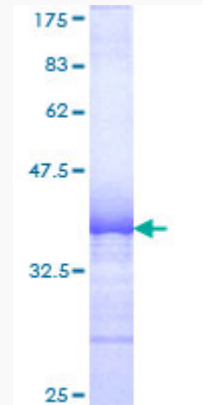
 Tel: 1-631-559-9269 1-516-512-3133

 Email: [info@creative-biomart.com](mailto:info@creative-biomart.com)  Fax: 1-631-938-8127

 45-1 Ramsey Road, Shirley, NY 11967, USA

**Quality Control**

**Testing:**



12.5% SDS-PAGE Stained with Coomassie Blue.

 Tel: 1-631-559-9269 1-516-512-3133

 Email: [info@creative-biomart.com](mailto:info@creative-biomart.com)  Fax: 1-631-938-8127

 45-1 Ramsey Road, Shirley, NY 11967, USA