

# Recombinant Full Length Human NCBP1 Protein, C-Flag-tagged

Cat. No. NCBP1-1356HFL    Lot. No. (See product label)

## SPECIFICATION

<b>Product Overview</b>	Recombinant Full Length Human NCBP1 Protein, fused to Flag-tag at C-terminus, was expressed in Mammalian cells.
<b>Species</b>	Human
<b>Source</b>	Mammalian Cells
<b>Description</b>	The product of this gene is a component of the nuclear cap-binding protein complex (CBC), which binds to the monomethylated 5' cap of nascent pre-mRNA in the nucleoplasm. The encoded protein promotes high-affinity mRNA-cap binding and associates with the CTD of RNA polymerase II. The CBC promotes pre-mRNA splicing, 3'-end processing, RNA nuclear export, and nonsense-mediated mRNA decay.
<b>Form</b>	25 mM Tris HCl, pH 7.3, 100 mM glycine, 10% glycerol.
<b>Molecular Mass</b>	91.7 kDa
<b>AA Sequence</b>	MSRRRHSDENDGGQPHKRRKTS DANETEDHLES LICKVGEKSACSLESNLEGLAG VLEADLPNYKSKILR LLCTVARLLPEKLT IYTTLVGLLNARNYNFGGEFVEAMIRQLKE SLKANNYNEAVYLVRFLSDLVNCHVI AAPSMVAMFENFVSVTQEEDVPQVRRDWY VYAFSSLPWVGKELYEKKDAEMDRIFANTESYLRKRRQKTH VPMLQVWTADKPHP QEEYLDCLWAQIQKLLKDRWQERHILRPYLAFDSILCEALQHNLPPFTPPPHTEDS V YPMPRVIFRMFDYTDDPEGPVMPGSHSVERFVIEENLHCIIKSHWKERKTCAAQLVS

 Tel: 1-631-559-9269    1-516-512-3133

 Email: [info@creative-biomart.com](mailto:info@creative-biomart.com)     Fax: 1-631-938-8127

 45-1 Ramsey Road, Shirley, NY 11967, USA

YPGKNKIPLNYH IVEVIFAELFQLPAPPHIDVMYTTLLIELCKLQPGSLPQVLAQATEM  
 LYMLRLDTMNTTCVDRFINWFSHH LSNFQFRWSWEDWSDCLSQDPESPCKPKFVRE  
 VLEKCMRLSYHQRILDIVPPTFSALCPANPTCIYKYGDE SSNSLPGHVSVALCLAVAFK  
 SKATNDEIFSILKDVPNPNQDDDDDEGFSFNPLKIEVFVQTLHLAAKSFS HSFSALA  
 KFHEVFKTLAESDEGKLVLRVMFEVWRNHPQMIAVLVDKMIRTQIVDCAAVANWIF  
 SSELSR DFTRLFVWEILHSTIRKMNKHVLKIQKELEEAKEKLARQHKRRSDDDDRSS  
 DRKDGVLEEQUIERLQEKVE SAQSEQKNLFLVIFQRFIMILTEHLVRCETDGTSVLTPW  
 YKNCIERLQQIFLQHHQIIQQYMTLENLLF  
 TAELDPHILAVFQQFCALQATRTRPLEQKLISEEDLAANDILDYKDDDDKV

**Purity** > 80% as determined by SDS-PAGE and Coomassie blue staining.

**Stability** Stable for 12 months from the date of receipt of the product under proper storage and handling conditions. Avoid repeated freeze-thaw cycles.

**Storage** Store at -80 centigrade.

**Concentration** >50 ug/mL as determined by microplate BCA method.

**Preparation** Recombinant protein was captured through anti-DDK affinity column followed by conventional chromatography steps.

**Protein Pathways** Spliceosome

**Full Length** Full L.

## GENE INFORMATION

**Gene Name** NCBP1 nuclear cap binding protein subunit 1 [ Homo sapiens (human) ]

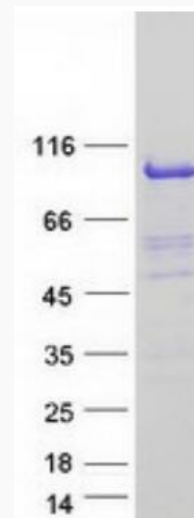
**Official Symbol** NCBP1

 Tel: 1-631-559-9269 1-516-512-3133

 Email: [info@creative-biomart.com](mailto:info@creative-biomart.com)  Fax: 1-631-938-8127

 45-1 Ramsey Road, Shirley, NY 11967, USA

<b>Synonyms</b>	NCBP; Sto1; CBP80
<b>Gene ID</b>	<a href="#">4686</a>
<b>mRNA Refseq</b>	<a href="#">NM_002486.5</a>
<b>Protein Refseq</b>	<a href="#">NP_002477.1</a>
<b>MIM</b>	<a href="#">600469</a>
<b>UniProt ID</b>	<a href="#">Q09161</a>



Coomassie blue staining of purified NCBP1 protein.

 Tel: 1-631-559-9269 1-516-512-3133

 Email: [info@creative-biomart.com](mailto:info@creative-biomart.com)  Fax: 1-631-938-8127

 45-1 Ramsey Road, Shirley, NY 11967, USA