

Recombinant Human NCF1 Protein (Met1-Val390), N-His tagged

Cat. No. NCF1-5112H Lot. No. (See product label)

SPECIFICATION

Product Overview	Recombinant human NCF1 (Met1-Val390) fused with the N-His tag was expressed in E. coli.
Species	Human
Source	E.coli
ProteinLength	Met1-Val390
Form	Lyophilized powder/frozen liquid
Molecular Mass	46.99 kDa
Purity	>90% as determined by SDS-PAGE.
Notes	For research use only.
Storage	Use a manual defrost freezer and avoid repeated freeze thaw cycles. Store at 2 to 8 centigrade for one week. Store at -20 to -80 centigrade for twelve months from the date of receipt.
Storage Buffer	0.01M PBS, pH 7.4, 0.02% NLS
Reconstitution	Reconstitute in sterile water for a stock solution.

 Tel: 1-631-559-9269 1-516-512-3133

 Email: info@creative-biomart.com  Fax: 1-631-938-8127

 45-1 Ramsey Road, Shirley, NY 11967, USA

Shipping They are shipped out with dry ice/blue ice unless customers require otherwise.

GENE INFORMATION

Gene Name NCF1 neutrophil cytosolic factor 1 [Homo sapiens (human)]

Official Symbol NCF1

Synonyms

NCF1; neutrophil cytosolic factor 1; neutrophil cytosolic factor 1 (47kD, chronic granulomatous disease, autosomal 1); neutrophil cytosol factor 1; chronic granulomatous disease; autosomal 1; NADPH oxidase organizer 2; NCF1A; NOXO2; p47phox; SH3PXD1A; NCF-1; NCF-47K; p47-phox; nox organizer 2; nox-organizing protein 2; 47 kDa neutrophil oxidase factor; neutrophil NADPH oxidase factor 1; SH3 and PX domain-containing protein 1A; 47 kDa autosomal chronic granulomatous disease protein; neutrophil cytosolic factor 1, (chronic granulomatous disease, autosomal 1); FLJ79451;

Gene ID 653361

mRNA Refseq NM_000265

Protein Refseq NP_000256

MIM 608512

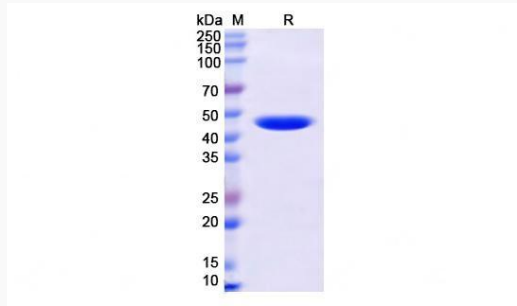
UniProt ID P14598

 Tel: 1-631-559-9269 1-516-512-3133

 Email: info@creative-biomart.com  Fax: 1-631-938-8127

 45-1 Ramsey Road, Shirley, NY 11967, USA

SDS-PAGE



 Tel: 1-631-559-9269 1-516-512-3133

 Email: info@creative-biomart.com  Fax: 1-631-938-8127

 45-1 Ramsey Road, Shirley, NY 11967, USA