

Active Recombinant Full Length Human NCF1 Protein, C-Flag-tagged

Cat. No. NCF1-576HFL Lot. No. (See product label)

SPECIFICATION

Product Overview	Recombinant Full Length Human NCF1 Protein, fused to Flag-tag at C-terminus, was expressed in Mammalian cells.
Species	Human
Source	Mammalian Cells
Description	The protein encoded by this gene is a 47 kDa cytosolic subunit of neutrophil NADPH oxidase. This oxidase is a multicomponent enzyme that is activated to produce superoxide anion. Mutations in this gene have been associated with chronic granulomatous disease.
Form	25 mM Tris HCl, pH 7.3, 100 mM glycine, 10% glycerol.
Bio-activity	Enzyme substrate
Molecular Mass	44.5 kDa
AA Sequence	MGDTFIRHIALLGFEKRFVPSQHYVYMFLVKWQDLSEKVVYRRFTEIYEFHKTLKEM FPIEAGAINPENR IIPHLPAKWFQDQRAAENRQGTLETCSTLMSLPTKISRCPHLL DFFKVRPDDLKLPDNDQTKKPEYTL MPKDGKSTATDITGPILQTYRAIANYEKTSGS EMALSTGDVVEVVEKSESGWWFCQMKAKRGWIPASFL EPLDSPDETEDPEPNYA GEPYVAIKAYTAVEGDEVSLLEGEAVEVIHKLLDGGWWVIRKDDVTGYFPSMYL QKS GQDVSQAQRQIKRGAPRRSSIRNAHSIHQRSRKRLSQDAYRRNSVRFLQQRRRQ

 Tel: 1-631-559-9269 1-516-512-3133

 Email: info@creative-biomart.com  Fax: 1-631-938-8127

 45-1 Ramsey Road, Shirley, NY 11967, USA

ARPGPQSPGSPL
 EEERQTQRSKPQPAVPPRPSADLILNRCSESTKRKLASPVTRTRPLEQKLISEEDLA
 ANDILDYKDDDDKV

Purity > 80% as determined by SDS-PAGE and Coomassie blue staining.

Stability Stable for 12 months from the date of receipt of the product under proper storage and handling conditions. Avoid repeated freeze-thaw cycles.

Storage Store at -80 centigrade.

Concentration >50 ug/mL as determined by microplate BCA method.

Preparation Recombinant protein was captured through anti-DDK affinity column followed by conventional chromatography steps.

Protein Pathways Chemokine signaling pathway, Fc gamma R-mediated phagocytosis, Leukocyte transendothelial migration, Pathogenic Escherichia coli infection, Regulation of actin cytoskeleton

Full Length Full L.

GENE INFORMATION

Gene Name NCF1 neutrophil cytosolic factor 1 [Homo sapiens (human)]

Official Symbol NCF1

Synonyms CGD1; NCF1A; NOXO2; p47phox; SH3PXD1A

Gene ID 653361

 Tel: 1-631-559-9269 1-516-512-3133

 Email: info@creative-biomart.com  Fax: 1-631-938-8127

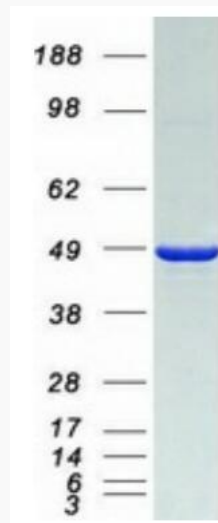
 45-1 Ramsey Road, Shirley, NY 11967, USA

mRNA Refseq [NM_000265.7](#)

Protein Refseq [NP_000256.4](#)

MIM [608512](#)

UniProt ID [P14598](#)



Coomassie blue staining of purified NCF1 protein.

 Tel: 1-631-559-9269 1-516-512-3133

 Email: info@creative-biomart.com  Fax: 1-631-938-8127

 45-1 Ramsey Road, Shirley, NY 11967, USA