

Recombinant Full Length Human NCF2 Protein, C-Flag-tagged

Cat. No. NCF2-573HFL Lot. No. (See product label)

SPECIFICATION

Product Overview	Recombinant Full Length Human NCF2 Protein, fused to Flag-tag at C-terminus, was expressed in Mammalian cells.
Species	Human
Source	Mammalian Cells
Description	This gene encodes neutrophil cytosolic factor 2, the 67-kilodalton cytosolic subunit of the multi-protein NADPH oxidase complex found in neutrophils. This oxidase produces a burst of superoxide which is delivered to the lumen of the neutrophil phagosome. Mutations in this gene, as well as in other NADPH oxidase subunits, can result in chronic granulomatous disease, a disease that causes recurrent infections by catalase-positive organisms. Alternative splicing results in multiple transcript variants encoding different isoforms.
Form	25 mM Tris HCl, pH 7.3, 100 mM glycine, 10% glycerol.
Molecular Mass	59.6 kDa
AA Sequence	MSLVEAISLWNEGVLAADKKDWKGALDAFSVQDPHSRICFNIGCMYTILKNMTEAE KAFTRSINRDKHL AVAYFQRGMLYYQTEKYDLAIKDLKEALIQLRGNQLIDYKILGLQ FKLFACEVLYNIAFMYAKKEEWKKA EEQLALATSMKSEPRHSKIDKAMECVWKQKL YEPVVIPVGRFLFRPNERQVAQLAKKDYLKATVVASVVD QDSFSGFAPLQPQAAEP PPRPKTPEIFRALEGEAHRVLFVGFVPETKEELQVMPGNIVFVLKKGNDNWATV MFN GQKGLVPCNYLEPVELRIHPQQQPQEESSPQSDIPAPPSSKAPGRPQLSPGQKQKE

 Tel: 1-631-559-9269 1-516-512-3133

 Email: info@creative-biomart.com  Fax: 1-631-938-8127

 45-1 Ramsey Road, Shirley, NY 11967, USA



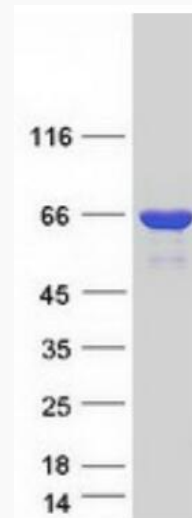
EPKEVKLSVPM PYTLKVHYKYTVVMKTQPGLPYSQVRDMVSKKLELRLEQTKLSYR
 PRDSNELVPLSEDSMKDAWGQVKNY CLTLWCENTVGDQGFDPDEPKSEKADANN
 QTTEPQLKKGSQVEALFSYEATQPEDLEFQEGDIILVLSKV
 NEEWLEGECKGKVGIFPKVFVEDCATTDLESTRREVTRTRPLEQKLISEEDLAANDIL
 DYKDDDDKV

Purity	> 80% as determined by SDS-PAGE and Coomassie blue staining.
Stability	Stable for 12 months from the date of receipt of the product under proper storage and handling conditions. Avoid repeated freeze-thaw cycles.
Storage	Store at -80 centigrade.
Concentration	>50 ug/mL as determined by microplate BCA method.
Preparation	Recombinant protein was captured through anti-DDK affinity column followed by conventional chromatography steps.
Protein Families	Druggable Genome
Protein Pathways	Leukocyte transendothelial migration
Full Length	Full L.

GENE INFORMATION

Gene Name	NCF2 neutrophil cytosolic factor 2 [Homo sapiens (human)]
Official Symbol	NCF2
Synonyms	NCF-2; NOXA2; P67PHOX; P67-PHOX

Gene ID	4688
mRNA Refseq	NM_001127651.3
Protein Refseq	NP_001121123.1
MIM	608515
UniProt ID	P19878



Coomassie blue staining of purified NCF2 protein.

Tel: 1-631-559-9269 1-516-512-3133

Email: info@creative-biomart.com Fax: 1-631-938-8127

45-1 Ramsey Road, Shirley, NY 11967, USA