

Recombinant Human Nucleolin-GFP Protein, His-tagged

Cat. No. NCL-01H Lot. No. (See product label)

SPECIFICATION

Product Overview Recombinant Human Nucleolin-GFP Protein with His tag was expressed in HEK293T.

Species Human

Source HEK293T

ProteinLength 1-710 aa

Conjugation/Label GFP

Description Nucleolin (NCL), a eukaryotic nucleolar phosphoprotein, is involved in the synthesis and maturation of ribosomes. It is located mainly in dense fibrillar regions of the nucleolus. Human NCL gene consists of 14 exons with 13 introns and spans approximately 11kb. The intron 11 of the NCL gene encodes a small nucleolar RNA, termed U20.

AASequence

```
MVKLAKAGKNQGDPKKMAPPPKEVEEDSEDEEMSEDEEDDSSGEEVVIPQKKGGK
AAATSARKVVVSPTKKVAVATPAKKA AVTPGKKAATPAKKT VTPAKAVTTPGKKGA
TPGKALVATPGKKGAAIPAKGAKNGKNAKKEDSDEEEDDDSEDEEDEDEDEDE
DEIEPAAMKAAAAAPASEDEDEDDEDDEDDEDDDDDEEDDSEEEAMETTPAKGKKAA
KVVPVKAKNVAEDEDEEEDDEDDEDDEDDDDDEDDEDEEEEEEEEEEPVKEAP
GKRKKEMAKQKAAPEAKKQKVEGTEPTTAFNLFVGNLNFNKSAPELKTGISDVFAK
NDLAVVDVRIGMTRKFGYVDFESAEDLEKALELTGLKVFGNEIKLEKPKGKDSKKER
DARTLLAKNLPYKVTQDELKEVFEDAAEIRLVSKDGKSKGIAYIEFKTEADA EKTFE EK
QGTEIDGRSISLYYTGEKGNQDYRGGKNSTWSGESKTLVLSNLSYSATEETLQEV
```

 Tel: 1-631-559-9269 1-516-512-3133

 Email: info@creative-biomart.com  Fax: 1-631-938-8127

 45-1 Ramsey Road, Shirley, NY 11967, USA

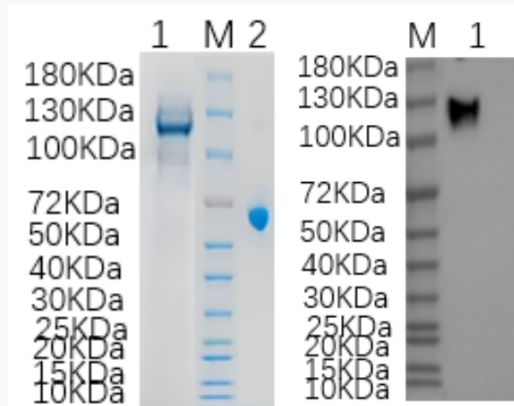
FEKATFIKVPQNNQNGKSKGYAFIEFASFEDAKEALNSCNKREIEGRAIRLELQGPRGS
 PNARSQPSKTLFVKGLSEDTTEETLKESFDGSRARIVTDRETGSSKGFVDFNSE
 EDAKAAKEAMEDGEIDGNKVTLDWAKPKGEGGFGRGGGRGGFGGRGGGRGGR
 GGFGRGRGGFGGRGGFRGGRGGGGDHPKQKKTKEFGTGGGVSKGEELFTGV
 VPILVELDGDVNGHKFSVSGEGEGDATYGKLTCLKFICTTGKLPVPWPTLVTTLTLYGV
 QCFSRYPDHMKQHDFFKSAMPEGYVQERTIFFKDDGNYKTRAEVKFEGDTLVNRIE
 LKGIDFKEDGNILGHKLEYNYNSHNVYIMADKQKNGIKVNFKIRHNIEDGSVQLADHY
 QQNTPIGDGPVLLPDNHYLSTQSKLSKDPNEKRDHMLLEFVTAAGITLGMDELYKH
 HHHHHHHHH

Molecular Mass	105 kDa
Purity	>80% by SDS-PAGE
Storage	Store it under sterile conditions at -20 to -80 centigrade. It is recommended that the protein be aliquoted for optimal storage. Avoid repeated freeze-thaw cycles.
Storage Buffer	Sterile PBS, pH7.4
Concentration	0.64 mg/mL by BCA

GENE INFORMATION

Gene ID	4691
Gene Name	NCL nucleolin [Homo sapiens (human)]
Official Symbol	4691
Synonyms	NCL; nucleolin; C23; Nsr1

mRNA Refseq	NM_005381
Official Symbol 2	NCL
Gene ID 2	4691
Gene Name 2	NCL nucleolin [Homo sapiens (human)]
mRNA Refseq 2	NM_005381
Protein Refseq 2	NP_005372
MIM 2	164035
UniProt ID 2	P19338

SDS-PAGE and WB


Reducing 4%-20% SDS-PAGE (CBB stained) and WB (Anti-His Mouse Monoclonal antibody) analysis profiles of purified Nucleolin-GFP. 1. Nucleolin-GFP 2. BSA

Tel: 1-631-559-9269 1-516-512-3133

Email: info@creative-biomart.com Fax: 1-631-938-8127

45-1 Ramsey Road, Shirley, NY 11967, USA