

Recombinant Human NCL Protein (Lys486-Arg561), N-His and N-SUMO tagged

Cat. No. NCL-4673H Lot. No. (See product label)

SPECIFICATION

Product Overview	Recombinant human NCL (Lys486-Arg561) fused with the N-His & N-SUMO tag was expressed in E. coli.
Species	Human
Source	E.coli
ProteinLength	Lys486-Arg561
Form	Lyophilized powder/frozen liquid
Molecular Mass	22.11 kDa
Purity	>90% as determined by SDS-PAGE.
Notes	For research use only.
Storage	Use a manual defrost freezer and avoid repeated freeze thaw cycles. Store at 2 to 8 centigrade for one week. Store at -20 to -80 centigrade for twelve months from the date of receipt.
Storage Buffer	0.01M PBS, pH 7.4, 0.02% NLS
Reconstitution	Reconstitute in sterile water for a stock solution.

 Tel: 1-631-559-9269 1-516-512-3133

 Email: info@creative-biomart.com  Fax: 1-631-938-8127

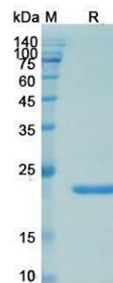
 45-1 Ramsey Road, Shirley, NY 11967, USA

Shipping

They are shipped out with dry ice/blue ice unless customers require otherwise.

GENE INFORMATION

Gene Name	NCL nucleolin [Homo sapiens (human)]
Official Symbol	NCL
Synonyms	NCL; nucleolin; C23; FLJ45706; FLJ59041;
Gene ID	4691
mRNA Refseq	NM_005381
Protein Refseq	NP_005372
MIM	164035
UniProt ID	P19338

SDS-PAGE


 Tel: 1-631-559-9269 1-516-512-3133

 Email: info@creative-biomart.com  Fax: 1-631-938-8127

 45-1 Ramsey Road, Shirley, NY 11967, USA