

Recombinant Human NCL Protein, Myc/DDK-tagged, C13 and N15-labeled

Cat. No. NCL-985H **Lot. No.** (See product label)

SPECIFICATION

Product Overview	NCL MS Standard C13 and N15-labeled recombinant protein (NP_005372) with a C-terminal MYC/DDK tag, was expressed in HEK293 cells.
Species	Human
Source	HEK293
Description	Nucleolin (NCL), a eukaryotic nucleolar phosphoprotein, is involved in the synthesis and maturation of ribosomes. It is located mainly in dense fibrillar regions of the nucleolus. Human NCL gene consists of 14 exons with 13 introns and spans approximately 11kb. The intron 11 of the NCL gene encodes a small nucleolar RNA, termed U20.
Molecular Mass	76.4 kDa
AA Sequence	MVKLAKAGKNQGDPKKMAPPPKEVEEDSEDEEMSEDEEDDSSGEEVVIPQKKGGK AAATSAKKVVVSPTKKVAVATPAKKA AVTPGKKA AATPAKKT VTPAKAVTTPGKKGA TPGKALVATPGKKGAAIPAKGAKNGKNAKKEDSDEEEDDDSEDEEDEDEDEDE DEIEPAAMKAAAAAPASEDEDEDDEDDEDDEDDDDDEEDDSEEEAMETTPAKGKKAA KVVPVKAKNVAEDEDEEEDDEDDEDDDDDEDDEDDDEDEEEEEEEEEEPVKEAP GKRKEMAKQKAAPEAKKQKVEGTEPTTAFNLVGNLNFNKSAPELKTGISDVFAK NDLAVVDVRIGMTRKFGYVDFESAEDLEKALELTGLKVFGNEIKLEKPKGKDSKKER DARTLLAKNLPYKVTQDELKEVFEDAAEIRLVSKDGKSKGIAYIEFKTEADA EKT FEEK

 Tel: 1-631-559-9269 1-516-512-3133

 Email: info@creative-biomart.com  Fax: 1-631-938-8127

 45-1 Ramsey Road, Shirley, NY 11967, USA

QGTEIDGRSISLYYTGEKGGQNDYRGGKNSTWSGESKTLVLSNLSYSATEETLQEV
 FEKATFIKVPQNNQNGKSKGYAFIEFASFEDAKEALNSCNKREIEGRAIRLELQGPRGS
 PNARSQPSKTLFVKGLSEDTTEETLKESFDGSRARIVTDRETGSSKGFVDFNSE
 EDAKAAKEAMEDGEIDGNKVTLDWAKPKGEGGFGRGGGRGGFGGRGGGRGRGR
 GGFGRGRGGFGGRGGFRGGRGGGGDHPKQGGKTKFETRTRPLEQKLISEEDLA
 ANDILDYKDDDDKV

Purity	> 80% as determined by SDS-PAGE and Coomassie blue staining
Stability	Stable for 3 months from receipt of products under proper storage and handling conditions.
Storage	Store at -80 centigrade. Avoid repeated freeze-thaw cycles.
Concentration	50 µg/mL as determined by BCA
Storage Buffer	100 mM glycine, 25 mM Tris-HCl, pH 7.3.

GENE INFORMATION

Gene Name	NCL nucleolin [Homo sapiens (human)]
Official Symbol	NCL
Synonyms	NCL; nucleolin; C23; FLJ45706; FLJ59041;
Gene ID	4691
mRNA Refseq	NM_005381
Protein Refseq	NP_005372

 Tel: 1-631-559-9269 1-516-512-3133

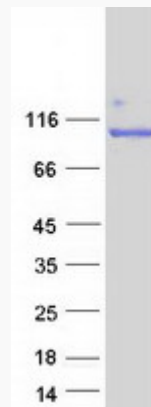
 Email: info@creative-biomart.com  Fax: 1-631-938-8127

 45-1 Ramsey Road, Shirley, NY 11967, USA

MIM 164035

UniProt ID P19338

SDS-PAGE



 Tel: 1-631-559-9269 1-516-512-3133

 Email: info@creative-biomart.com  Fax: 1-631-938-8127

 45-1 Ramsey Road, Shirley, NY 11967, USA