

Recombinant Human NCR2 Protein, MYC/DDK-tagged, C13 and N15-labeled

Cat. No. NCR2-236H **Lot. No.** (See product label)

SPECIFICATION

Product Overview	NCR2 MS Standard C13 and N15-labeled recombinant protein (NP_004819) with a C-terminal MYC/DDK tag, was expressed in HEK293 cells.
Species	Human
Source	HEK293
Description	Cytotoxicity-activating receptor that may contribute to the increased efficiency of activated natural killer (NK) cells to mediate tumor cell lysis. [UniProtKB/Swiss-Prot Function]
Molecular Mass	30.5 kDa
AA Sequence	MAWRALHPLLLLLLLFPGSQAQSKAQVLQSVAGQTLTVRCQYPPTGSLYEKKGWCK EASALVCIRLVTSKPRMTAWTSRFTIWDDPDAGFFVTMTDLREEDSGHYWCRIY RPSDNSVSKSVRFYLVVSPASASTQTPWTPRDLVSSQTQTQSCVPPTAGARQAPE SPSTIPVPSQPQNSTLRPGPAAPIALVPVFCGLLVAKSLVLSALLVWWGDIWWKTVM ELRSLDTQKATCHLQQVTDLPWTSVSSPVEREILYHTVARTKISDDDDDEHTLTRTRP LEQKLISEEDLAANDILDYKDDDDDKV
Purity	> 80% as determined by SDS-PAGE and Coomassie blue staining
Stability	Stable for 3 months from receipt of products under proper storage and handling conditions.

 Tel: 1-631-559-9269 1-516-512-3133

 Email: info@creative-biomart.com  Fax: 1-631-938-8127

 45-1 Ramsey Road, Shirley, NY 11967, USA

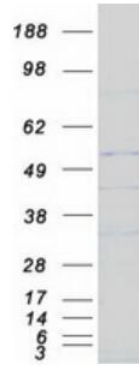
Storage	Store at -80 centigrade. Avoid repeated freeze-thaw cycles.
Concentration	50 µg/mL as determined by BCA
Storage Buffer	100 mM glycine, 25 mM Tris-HCl, pH 7.3.
GENE INFORMATION	
Gene Name	NCR2 natural cytotoxicity triggering receptor 2 [Homo sapiens (human)]
Official Symbol	NCR2
Synonyms	NCR2; natural cytotoxicity triggering receptor 2; LY95, lymphocyte antigen 95 (activating NK receptor; NK p44); CD336; NK p44; NK cell-activating receptor; NK cell activating receptor (NKp44); natural killer cell p44-related protein; lymphocyte antigen 95 (activating NK-receptor; NK-p44); lymphocyte antigen 95 homolog (activating NK-receptor; LY95; NKP44; NK-p44; dJ149M18.1;
Gene ID	9436
mRNA Refseq	NM_004828
Protein Refseq	NP_004819
MIM	604531
UniProt ID	O95944

 Tel: 1-631-559-9269 1-516-512-3133

 Email: info@creative-biomart.com  Fax: 1-631-938-8127

 45-1 Ramsey Road, Shirley, NY 11967, USA

SDS-PAGE



 Tel: 1-631-559-9269 1-516-512-3133

 Email: info@creative-biomart.com  Fax: 1-631-938-8127

 45-1 Ramsey Road, Shirley, NY 11967, USA