

Recombinant Human NCR3 protein, His-Avi-tagged

Cat. No. NCR3-582H Lot. No. (See product label)

SPECIFICATION

Product Overview	Recombinant Human NCR3 protein(AAH52582)(Leu19-Thr138), fused with C-terminal His and Avi tag, was expressed in HEK293.
Species	Human
Source	HEK293
ProteinLength	Leu19-Thr138
Tag	C-His-Avi
Form	Lyophilized from 0.22µm filtered solution in PBS (pH 7.4). Normally 5% trehalose is added as protectant before lyophilization.
Bio-activity	Immobilized Human NKp30, His Tag at 2µg/ml (100µl/well) on the plate. Dose response curve for Human B7-H6, hFc Tag with the EC50 of 55.9ng/ml determined by ELISA.
Molecular Mass	The protein has a predicted MW of 20 kDa. Due to glycosylation, the protein migrates to 26-40 kDa based on Tris-Bis PAGE result.
Endotoxin	Less than 1EU per µg by the LAL method.
Purity	> 95% as determined by Tris-Bis PAGE; > 95% as determined by HPLC

 Tel: 1-631-559-9269 1-516-512-3133

 Email: info@creative-biomart.com  Fax: 1-631-938-8127

 45-1 Ramsey Road, Shirley, NY 11967, USA

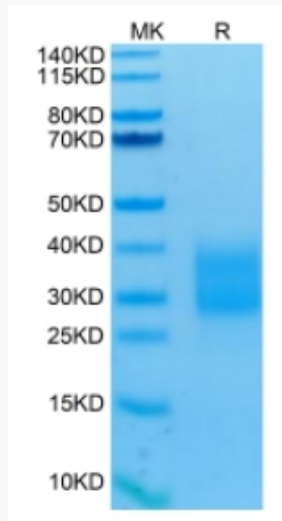
Storage	Reconstituted protein stable at -80°C for 12 months, 4°C for 1 week. Use a manual defrost freezer and avoid repeated freeze-thaw cycles.
Reconstitution	Centrifuge tubes before opening. Reconstituting to a concentration more than 100 µg/ml is recommended. Dissolve the lyophilized protein in distilled water.
GENE INFORMATION	
Gene Name	NCR3 natural cytotoxicity triggering receptor 3 [Homo sapiens]
Official Symbol	NCR3
Synonyms	NCR3; natural cytotoxicity triggering receptor 3; LY117, lymphocyte antigen 117; 1C7; CD337; NKp30; NK-p30; lymphocyte antigen 117; activating NK-A1 receptor; activating natural killer receptor p30; natural killer cell p30-related protein; MALS; LY117;
Gene ID	259197
mRNA Refseq	NM_001145466
Protein Refseq	NP_001138938
MIM	611550
UniProt ID	O14931

 Tel: 1-631-559-9269 1-516-512-3133

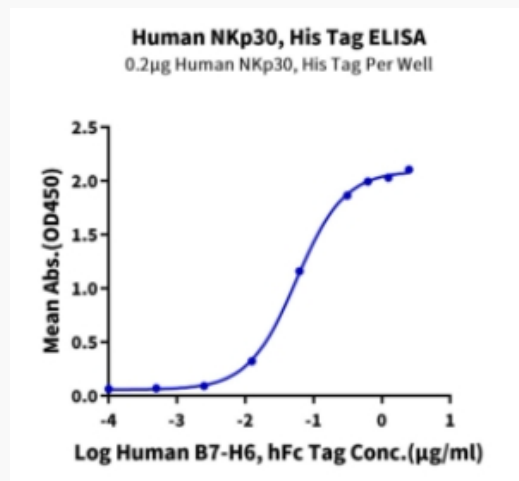
 Email: info@creative-biomart.com  Fax: 1-631-938-8127

 45-1 Ramsey Road, Shirley, NY 11967, USA

Tris-Bis PAGE



ELISA Data



 Tel: 1-631-559-9269 1-516-512-3133

 Email: info@creative-biomart.com  Fax: 1-631-938-8127

 45-1 Ramsey Road, Shirley, NY 11967, USA