

# Recombinant Human NCR3LG1 Protein (Asp25-Ser262), C-His-tagged

Cat. No. NCR3LG1-0364H    Lot. No. (See product label)

## SPECIFICATION

<b>Product Overview</b>	Recombinant human NCR3LG1 (Asp25-Ser262) was fused with the C-terminal His tag and was expressed in Mammalian cells.
<b>Species</b>	Human
<b>Source</b>	Mammalian Cells
<b>ProteinLength</b>	Asp25-Ser262
<b>Form</b>	Lyophilized powder/frozen liquid
<b>Molecular Mass</b>	37.18 kDa
<b>Purity</b>	>90% as determined by SDS-PAGE
<b>Notes</b>	For research use only.
<b>Storage</b>	Use a manual defrost freezer and avoid repeated freeze thaw cycles. Store at 2 to 8 centigrade for one week. Store at -20 to -80 centigrade for twelve months from the date of receipt.
<b>Storage Buffer</b>	Supplied as solution form in PBS or lyophilized from PBS.
<b>Reconstitution</b>	Reconstitute in sterile water for a stock solution.

 Tel: 1-631-559-9269    1-516-512-3133

 Email: [info@creative-biomart.com](mailto:info@creative-biomart.com)     Fax: 1-631-938-8127

 45-1 Ramsey Road, Shirley, NY 11967, USA

**Shipping** They are shipped out with dry ice/blue ice unless customers require otherwise.

## GENE INFORMATION

**Gene Name** NCR3LG1 natural killer cell cytotoxicity receptor 3 ligand 1 [ Homo sapiens (human) ]

**Official Symbol** NCR3LG1

**Synonyms** NCR3LG1; natural killer cell cytotoxicity receptor 3 ligand 1; natural cytotoxicity triggering receptor 3 ligand 1; B7H6; B7-H6; DKFZp686O24166; B7 homolog 6; putative Ig-like domain-containing protein DKFZp686O24166/DKFZp686I21167

**Gene ID** 374383

**mRNA Refseq** NM\_001202439

**Protein Refseq** NP\_001189368

**MIM** 613714

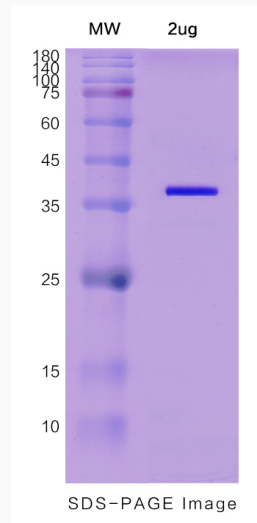
**UniProt ID** Q68D85

 Tel: 1-631-559-9269 1-516-512-3133

 Email: [info@creative-biomart.com](mailto:info@creative-biomart.com)  Fax: 1-631-938-8127

 45-1 Ramsey Road, Shirley, NY 11967, USA

**SDS-PAGE**



 Tel: 1-631-559-9269 1-516-512-3133

 Email: [info@creative-biomart.com](mailto:info@creative-biomart.com)  Fax: 1-631-938-8127

 45-1 Ramsey Road, Shirley, NY 11967, USA