

# Active Recombinant Human NCR3LG1 protein, Fc/Avi-tagged, Biotinylated

**Cat. No.** NCR3LG1-051H    **Lot. No.** (See product label)

## SPECIFICATION

<b>Product Overview</b>	Biotinylated Recombinant Human NCR3LG1(Asp25-Ser262) protein, fused to Fc/Avi tag at the C-terminus, was expressed in CHO cells .
<b>Species</b>	Human
<b>Source</b>	CHO
<b>ProteinLength</b>	Asp25-Ser262
<b>Description</b>	<p>NCR3LG1 is a glycosylated member of the B7 family of immune co-stimulatory proteins (1, 2). Mature human NCR3LG1 consists of a 238 amino acid (aa) extracellular domain (ECD) that contains one Ig-like V domain and one Ig-like C1 domain, a 21 aa transmembrane segment, and a 171 aa cytoplasmic domain that contains one ITIM, one SH2, and one SH3 motif (3). Both of the Ig-like domains carry N-linked glycosylation (4). Within the ECD, human NCR3LG1 shares 99%, 94%, and 87% aa sequence identity with chimpanzee, orangutan, and gibbon B7-H6, respectively, and 53% - 56% with bovine, canine, and equine B7-H6. Orthologs in mouse and rat have not been identified. The Ig-like V domain mediates 1:1 stoichiometric binding of B7-H6 to NKp30 expressed on NK cells (4, 5). It does not show binding to NKp44, NKp46, or NKG2D (3, 6). Ligation of NKp30 by B7-H6 induces NK cell activation and target cell cytolysis (3). B7-H6 is expressed on a wide range of hematopoietic, carcinoma, and melanoma tumor cells, which is consistent with the detection of NKp30 binding sites on</p>

 Tel: 1-631-559-9269    1-516-512-3133

 Email: [info@creative-biomart.com](mailto:info@creative-biomart.com)     Fax: 1-631-938-8127

 45-1 Ramsey Road, Shirley, NY 11967, USA

many tumors (3, 7). The expression of NKp30 ligands on tumor cells correlates with tumor cell sensitivity to NKp30-dependent cell lysis (7). Our Avi-tag Biotinylated human NCR3LG1 features biotinylation at a single site contained within the Avi-tag, a unique 15 amino acid peptide. Protein orientation will be uniform when bound to streptavidin-coated surface due to the precise control of biotinylation and the rest of the protein is unchanged so there is no interference in the protein's bioactivity.

<b>Predicted N Terminal</b>	Asp25
<b>Form</b>	Lyophilized from a 0.2 µm filtered solution in PBS with Trehalose.
<b>Bio-activity</b>	Measured by its binding ability in a functional ELISA.
<b>Molecular Mass</b>	70-78 kDa, under reducing conditions
<b>Endotoxin</b>	<0.10 EU per 1 µg of the protein by the LAL method.
<b>Purity</b>	>95%, by SDS-PAGE visualized with Silver Staining and quantitative densitometry by Coomassie® Blue Staining.
<b>Applications</b>	Bioactivity
<b>Storage</b>	Use a manual defrost freezer and avoid repeated freeze-thaw cycles. 12 months from date of receipt, -20 to -70 °C as supplied. 1 month, 2 to 8 °C under sterile conditions after reconstitution. 3 months, -20 to -70 °C under sterile conditions after reconstitution.
<b>Reconstitution</b>	Reconstitute at 250 µg/mL in PBS.

 Tel: 1-631-559-9269 1-516-512-3133

 Email: [info@creative-biomart.com](mailto:info@creative-biomart.com)  Fax: 1-631-938-8127

 45-1 Ramsey Road, Shirley, NY 11967, USA

**Conjugation**                      Biotin

## GENE INFORMATION

**Gene Name**                      [NCR3LG1 natural killer cell cytotoxicity receptor 3 ligand 1 \[ Homo sapiens \]](#)

**Official Symbol**                [NCR3LG1](#)

**Synonyms**                      B7H6; B7-H6; DKFZp686O24166; DKFZp686I21167; natural cytotoxicity triggering receptor 3 ligand 1; B7 homolog 6; putative Ig-like domain-containing protein DKFZp686O24166/DKFZp686I21167

**Gene ID**                          [374383](#)

**mRNA Refseq**                 [NM\\_001202439.1](#)

**Protein Refseq**                [NP\\_001189368.1](#)

**MIM**                                [613714](#)

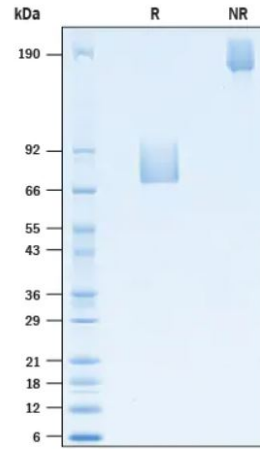
**UniProt ID**                      [Q68D85](#)

 Tel: 1-631-559-9269    1-516-512-3133

 Email: [info@creative-biomart.com](mailto:info@creative-biomart.com)     Fax: 1-631-938-8127

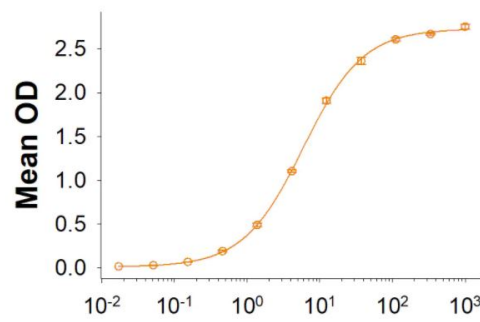
 45-1 Ramsey Road, Shirley, NY 11967, USA

**SDS-PAGE**



2 µg/lane Protein was resolved with SDS-PAGE under reducing (R) and non-reducing (NR) conditions and visualized by Coomassie® Blue staining.

**Binding Activity**



 Tel: 1-631-559-9269 1-516-512-3133

 Email: [info@creative-biomart.com](mailto:info@creative-biomart.com)  Fax: 1-631-938-8127

 45-1 Ramsey Road, Shirley, NY 11967, USA