

Recombinant Human NCR3LG1 protein(Asp25-Ser262), His-tagged

Cat. No. NCR3LG1-2943H **Lot. No.** (See product label)

SPECIFICATION

Product Overview	Recombinant Human NCR3LG1 protein(Asp25-Ser262)(NP_001189368.1) was expressed in HEK293 with a polyhistidine tag at the C-terminus.
Species	Human
Source	HEK293
ProteinLength	Asp25-Ser262
Form	Lyophilized from sterile PBS, pH 7.4. Normally 5 % – 8% trehalose is added as protectants before lyophilization.
Bio-activity	ELISA plate pre-coated by 2 µg/ml (100 µl/well) Human B7-H6, His tagged protein can bind Human NKp30, hFc tagged protein in a linear range of 250-2000 ng/ml.
Molecular Mass	The protein has a predicted molecular mass of 27.5 kDa after removal of the signal peptide. The apparent molecular mass of B7-H6-His is approximately 35-55 kDa due to glycosylation.
Purity	The purity of the protein is greater than 95% as determined by SDS-PAGE and Coomassie blue staining.
Storage	Store at -20°C to -80°C for 12 months in lyophilized form. After reconstitution, if not intended for use within a month, aliquot and store at -80°C (Avoid repeated freezing)

 Tel: 1-631-559-9269 1-516-512-3133

 Email: info@creative-biomart.com  Fax: 1-631-938-8127

 45-1 Ramsey Road, Shirley, NY 11967, USA

and thawing). Lyophilized proteins are shipped at ambient temperature.

Reconstitution

It is recommended that sterile water be added to the vial to prepare a stock solution of 0.2 ug/ul. Centrifuge the vial at 4°C before opening to recover the entire contents.

GENE INFORMATION

Gene Name [NCR3LG1 natural killer cell cytotoxicity receptor 3 ligand 1 \[Homo sapiens \]](#)

Official Symbol [NCR3LG1](#)

Synonyms B7H6; B7-H6; DKFZp686O24166; DKFZp686I21167; natural cytotoxicity triggering receptor 3 ligand 1; B7 homolog 6; putative Ig-like domain-containing protein DKFZp686O24166/DKFZp686I21167

Gene ID [374383](#)

mRNA Refseq [NM_001202439](#)

Protein Refseq [NP_001189368](#)

MIM [613714](#)

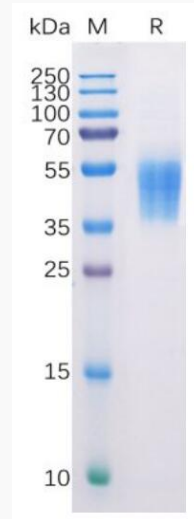
UniProt ID [Q68D85](#)

 Tel: 1-631-559-9269 1-516-512-3133

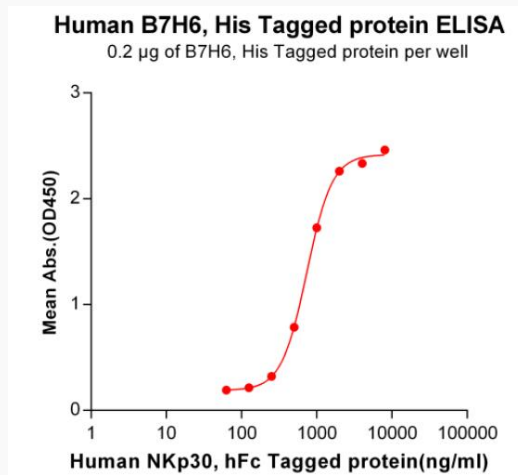
 Email: info@creative-biomart.com  Fax: 1-631-938-8127

 45-1 Ramsey Road, Shirley, NY 11967, USA

SDS-PAGE



Activity



 Tel: 1-631-559-9269 1-516-512-3133

 Email: info@creative-biomart.com  Fax: 1-631-938-8127

 45-1 Ramsey Road, Shirley, NY 11967, USA