

Recombinant Human NCR3LG1 Protein (Met1-Ser262), C-His tagged

Cat. No. NCR3LG1-3817H **Lot. No.** (See product label)

SPECIFICATION

Product Overview	Recombinant human NCR3LG1 (Met1-Ser262) fused with the C-terminal His tag was expressed in Mammalian cells.
Species	Human
Source	Mammalian Cells
ProteinLength	Met1-Ser262
Description	B7H6 belongs to the B7 family (see MIM 605402) and is selectively expressed on tumor cells. Interaction of B7H6 with NKp30 (NCR3; MIM 611550) results in natural killer (NK) cell activation and cytotoxicity (Brandt et al., 2009 [PubMed 19528259]) .
Form	Lyophilized powder/frozen liquid
Molecular Mass	28.93 kDa
Purity	>90% as determined by SDS-PAGE.
Notes	For research use only.
Storage	Use a manual defrost freezer and avoid repeated freeze thaw cycles. Store at 2 to 8 centigrade for one week. Store at -20 to -80 centigrade for twelve months from the date of receipt.

 Tel: 1-631-559-9269 1-516-512-3133

 Email: info@creative-biomart.com  Fax: 1-631-938-8127

 45-1 Ramsey Road, Shirley, NY 11967, USA

Storage Buffer	Supplied as solution form in PBS or lyophilized from PBS.
Reconstitution	Reconstitute in sterile water for a stock solution.
Shipping	They are shipped out with dry ice/blue ice unless customers require otherwise.

GENE INFORMATION

Gene Name	NCR3LG1 natural killer cell cytotoxicity receptor 3 ligand 1 [Homo sapiens (human)]
Official Symbol	NCR3LG1
Synonyms	NCR3LG1; natural killer cell cytotoxicity receptor 3 ligand 1; B7H6; B7-H6; DKFZp686O24166; natural cytotoxicity triggering receptor 3 ligand 1; B7 homolog 6; putative Ig-like domain-containing protein DKFZp686O24166/DKFZp686I21167
Gene ID	374383
mRNA Refseq	NM_001202439
Protein Refseq	NP_001189368
MIM	613714
UniProt ID	Q68D85

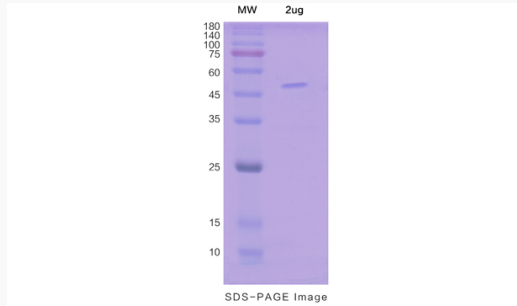
 Tel: 1-631-559-9269 1-516-512-3133

 Email: info@creative-biomart.com  Fax: 1-631-938-8127

 45-1 Ramsey Road, Shirley, NY 11967, USA



SDS-PAGE



Tel: 1-631-559-9269 1-516-512-3133

Email: info@creative-biomart.com Fax: 1-631-938-8127

45-1 Ramsey Road, Shirley, NY 11967, USA