

# Recombinant Human NCR3LG1 Protein (Asp25-Ser262), N-His tagged

**Cat. No.** NCR3LG1-3818H    **Lot. No.** (See product label)

## SPECIFICATION

<b>Product Overview</b>	Recombinant human NCR3LG1 (Asp25-Ser262) fused with the N-His tag was expressed in E. coli.
<b>Species</b>	Human
<b>Source</b>	E.coli
<b>ProteinLength</b>	Asp25-Ser262
<b>Description</b>	B7H6 belongs to the B7 family (see MIM 605402) and is selectively expressed on tumor cells. Interaction of B7H6 with NKp30 (NCR3; MIM 611550) results in natural killer (NK) cell activation and cytotoxicity (Brandt et al., 2009 [PubMed 19528259]) .
<b>Form</b>	Lyophilized powder/frozen liquid
<b>Molecular Mass</b>	28.99 kDa
<b>Purity</b>	>90% as determined by SDS-PAGE.
<b>Notes</b>	For research use only.
<b>Storage</b>	Use a manual defrost freezer and avoid repeated freeze thaw cycles. Store at 2 to 8 centigrade for one week. Store at -20 to -80 centigrade for twelve months from the date of receipt.

 Tel: 1-631-559-9269    1-516-512-3133

 Email: [info@creative-biomart.com](mailto:info@creative-biomart.com)     Fax: 1-631-938-8127

 45-1 Ramsey Road, Shirley, NY 11967, USA

<b>Storage Buffer</b>	0.01M PBS, pH 7.4, 0.02% NLS
<b>Reconstitution</b>	Reconstitute in sterile water for a stock solution.
<b>Shipping</b>	They are shipped out with dry ice/blue ice unless customers require otherwise.

## GENE INFORMATION

<b>Gene Name</b>	NCR3LG1 natural killer cell cytotoxicity receptor 3 ligand 1 [ Homo sapiens (human) ]
<b>Official Symbol</b>	NCR3LG1
<b>Synonyms</b>	NCR3LG1; natural killer cell cytotoxicity receptor 3 ligand 1; B7H6; B7-H6; DKFZp686O24166; natural cytotoxicity triggering receptor 3 ligand 1; B7 homolog 6; putative Ig-like domain-containing protein DKFZp686O24166/DKFZp686I21167
<b>Gene ID</b>	374383
<b>mRNA Refseq</b>	NM_001202439
<b>Protein Refseq</b>	NP_001189368
<b>MIM</b>	613714
<b>UniProt ID</b>	Q68D85

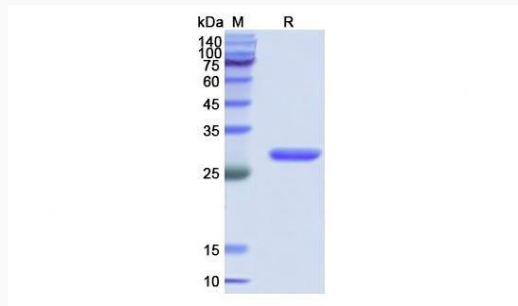
 Tel: 1-631-559-9269 1-516-512-3133

 Email: [info@creative-biomart.com](mailto:info@creative-biomart.com)  Fax: 1-631-938-8127

 45-1 Ramsey Road, Shirley, NY 11967, USA



SDS-PAGE



Tel: 1-631-559-9269 1-516-512-3133

Email: [info@creative-biomart.com](mailto:info@creative-biomart.com) Fax: 1-631-938-8127

45-1 Ramsey Road, Shirley, NY 11967, USA