

Recombinant Human NCR3LG1 protein, hFc-tagged

Cat. No. NCR3LG1-546H Lot. No. (See product label)

SPECIFICATION

Product Overview	Recombinant Human NCR3LG1 protein(Q68D85-1)(Asp25-Ser262), fused with C-terminal hFc tag, was expressed in HEK293.
Species	Human
Source	HEK293
ProteinLength	Asp25-Ser262
Tag	C-hFc
Form	Lyophilized from 0.22µm filtered solution in PBS (pH 7.4). Normally 5% trehalose is added as protectant before lyophilization.
Bio-activity	Immobilized Human NKp30, His Tag at 2µg/ml (100µl/well) on the plate. Dose response curve for Human B7-H6, hFc Tag with the EC50 of 55.9ng/ml determined by ELISA.
Molecular Mass	The protein has a predicted MW of 53.4 kDa. Due to glycosylation, the protein migrates to 70-80 kDa based on Tris-Bis PAGE result.
Endotoxin	Less than 1EU per µg by the LAL method.
Purity	> 95% as determined by Tris-Bis PAGE; > 95% as determined by HPLC

 Tel: 1-631-559-9269 1-516-512-3133

 Email: info@creative-biomart.com  Fax: 1-631-938-8127

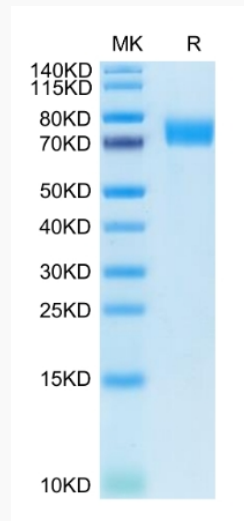
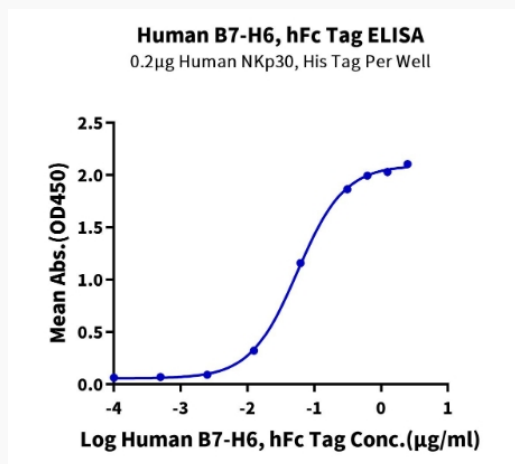
 45-1 Ramsey Road, Shirley, NY 11967, USA

Storage

Reconstituted protein stable at -80°C for 12 months, 4°C for 1 week. Use a manual defrost freezer and avoid repeated freeze-thaw cycles.

Reconstitution

Centrifuge tubes before opening. Reconstituting to a concentration more than 100 µg/ml is recommended. Dissolve the lyophilized protein in distilled water.

Tris-Bis PAGE

ELISA Data


Tel: 1-631-559-9269 1-516-512-3133

Email: info@creative-biomart.com Fax: 1-631-938-8127

45-1 Ramsey Road, Shirley, NY 11967, USA