

Recombinant Human NDE1 protein, His&Myc-tagged

Cat. No. NDE1-5533H Lot. No. (See product label)

SPECIFICATION

Product Overview	Recombinant Human NDE1 protein(Q9NXR1)(1-335aa), fused with N-terminal His tag and C-terminal Myc tag, was expressed in E.coli.
Species	Human
Source	E.coli
ProteinLength	1-335a.a.
Tag	His&Myc
Form	If the delivery form is liquid, the default storage buffer is Tris/PBS-based buffer, 5%-50% glycerol. If the delivery form is lyophilized powder, the buffer before lyophilization is Tris/PBS-based buffer, 6% Trehalose, pH 8.0.
Molecular Mass	45.2 kDa
Purity	Greater than 85% as determined by SDS-PAGE.
Storage	Store at -20°C/-80°C upon receipt, aliquoting is necessary for mutiple use. Avoid repeated freeze-thaw cycles.
Reconstitution	We recommend that this vial be briefly centrifuged prior to opening to bring the contents to the bottom. Please reconstitute protein in deionized sterile water to a concentration of 0.1-1.0 mg/mL.We recommend to add 5-50% of glycerol (final

 Tel: 1-631-559-9269 1-516-512-3133

 Email: info@creative-biomart.com  Fax: 1-631-938-8127

 45-1 Ramsey Road, Shirley, NY 11967, USA

concentration) and aliquot for long-term storage at -20°C/-80°C.

AA Sequence

MEDSGKTFSSSEEEANYWKDLAMTYKQRAENTQEELREFQEGSREYEAELETQLQ
 QIETRNRDLLSENNRLRMELETIKEKFEVQHSEGYRQISALEDDLAQTKAIKDQLQKY
 IRELEQANDDLERAKRATIMSLEDFEQRLNQAIERNAFLESELDEKENLLESVQRLKD
 EARDLRQELAVQQKQEKPRTPMPSSVEAERTDTAVQATGSPSTPIAHRGPSSSLN
 TPGSFRRGLDDSTGGTPLTPAARISALNIVGDLLRKVGALESKLASCRLVYDQSPN
 RTGGPASGRSSKNRDGGERRPSSTSVPLGDKGLDTSRWLSKSTTRSSSSC

GENE INFORMATION

Gene Name [NDE1 nudE nuclear distribution E homolog 1 \(A. nidulans\) \[Homo sapiens \]](#)

Official Symbol [NDE1](#)

Synonyms

NDE1; nudE nuclear distribution E homolog 1 (A. nidulans); nudE nuclear distribution gene E homolog 1 (A. nidulans); nuclear distribution protein nudE homolog 1; FLJ20101; NUDE; nudE nuclear distribution gene E homolog 1; LIS1-interacting protein NUDE1, rat homolog; LIS4; NUDE1; HOM-TES-87;

Gene ID [54820](#)

mRNA Refseq [NM_001143979](#)

Protein Refseq [NP_001137451](#)

MIM [609449](#)

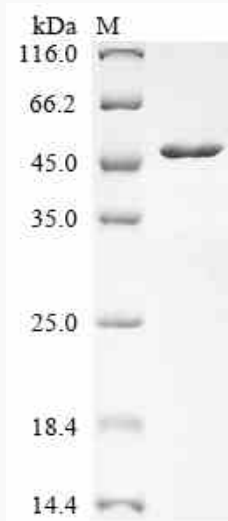
UniProt ID [Q9NXR1](#)

 Tel: 1-631-559-9269 1-516-512-3133

 Email: info@creative-biomart.com  Fax: 1-631-938-8127

 45-1 Ramsey Road, Shirley, NY 11967, USA

SDS-PAGE



 Tel: 1-631-559-9269 1-516-512-3133

 Email: info@creative-biomart.com  Fax: 1-631-938-8127

 45-1 Ramsey Road, Shirley, NY 11967, USA