

Recombinant Human NDE1 protein, His-tagged

Cat. No. NDE1-6055H Lot. No. (See product label)

SPECIFICATION

Product Overview	Recombinant Human NDE1 protein(Q9NXR1-2)(350aa), fused with N-terminal His tag, was expressed in E. coli.
Species	Human
Source	E.coli
Protein Length	350aa(including fusion tag)
Tag	N-His
Form	20mM Tris.Cl, 50mM NaCl, 50% Glycerol, pH8.0.
Molecular Mass	39.6kDa(including fusion tag)
Storage	Store at -80°C and avoid repeated freeze-thaw cycles.
Reconstitution	It is recommended that sterile water be added to the vial to prepare a stock solution of 0.2 ug/ul. Centrifuge the vial at 4°C before opening to recover the entire contents.

GENE INFORMATION

Gene Name	NDE1 nudE nuclear distribution E homolog 1 (A. nidulans) [Homo sapiens]
Official Symbol	NDE1

 Tel: 1-631-559-9269 1-516-512-3133

 Email: info@creative-biomart.com  Fax: 1-631-938-8127

 45-1 Ramsey Road, Shirley, NY 11967, USA

Synonyms NDE1; nudE nuclear distribution E homolog 1 (A. nidulans); nudE nuclear distribution gene E homolog 1 (A. nidulans); nuclear distribution protein nudE homolog 1; FLJ20101; NUDE; nudE nuclear distribution gene E homolog 1; LIS1-interacting protein NUDE1, rat homolog; LIS4; NUDE1; HOM-TES-87;

Gene ID [54820](#)

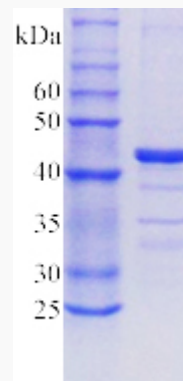
mRNA Refseq [NM_001143979](#)

Protein Refseq [NP_001137451](#)

MIM [609449](#)

UniProt ID [Q9NXR1](#)

SDS-PAGE



 Tel: 1-631-559-9269 1-516-512-3133

 Email: info@creative-biomart.com  Fax: 1-631-938-8127

 45-1 Ramsey Road, Shirley, NY 11967, USA