

Recombinant Human NDE1 Protein, Myc/DDK-tagged, C13 and N15-labeled

Cat. No. NDE1-6517H **Lot. No.** (See product label)

SPECIFICATION

Product Overview

NDE1 MS Standard C13 and N15-labeled recombinant protein (NP_060138) with a C-terminal MYC/DDK tag, was expressed in HEK293 cells.

Species

Human

Source

HEK293

Description

This gene encodes a member of the nuclear distribution E (NudE) family of proteins. The encoded protein is localized at the centrosome and interacts with other centrosome components as part of a multiprotein complex that regulates dynein function. This protein plays an essential role in microtubule organization, mitosis and neuronal migration. Mutations in this gene cause lissencephaly 4, a disorder characterized by lissencephaly, severe brain atrophy, microcephaly, and severe cognitive disability. Alternative splicing results in multiple transcript variants.

Molecular Mass

37.7 kDa

AA Sequence

MEDSGKTFSSSEEEANYWKDLAMTYKQRAENTQEELREFQEGSREYEAELETQLQ
 QIETNRDLLSENNRLRMELETIKEKFEVQHSEGYRQISALEDDLAQTKAIKDQLQKY
 IRELEQANDDLERAKRATIMSLEDFEQRLNQAIERNAFLESELDEKENLLESVQRLKD
 EARDLRQELAVQQKQEKPRTPMPSSVEAERTDTAVQATGSPSTPIAHRGPSSSLN
 TPGSFRRGLDDSTGGTPLTPAARISALNIVGDLLRKGVALESKLASCRNLVYDQSPN
 RTGGPASGRSSKNRDGGERRPSSTSVPLGDKGLDTSRWLSKSTTRSSSSCTRTR

 Tel: 1-631-559-9269 1-516-512-3133

 Email: info@creative-biomart.com  Fax: 1-631-938-8127

 45-1 Ramsey Road, Shirley, NY 11967, USA

PLEQKLISEEDLAANDILDYKDDDDKV

Purity > 80% as determined by SDS-PAGE and Coomassie blue staining

Stability Stable for 3 months from receipt of products under proper storage and handling conditions.

Storage Store at -80 centigrade. Avoid repeated freeze-thaw cycles.

Concentration 50 µg/mL as determined by BCA

Storage Buffer 100 mM glycine, 25 mM Tris-HCl, pH 7.3.

GENE INFORMATION

Gene Name [NDE1 nudE neurodevelopment protein 1 \[Homo sapiens \(human\) \]](#)

Official Symbol [NDE1](#)

Synonyms NDE1; nudE nuclear distribution E homolog 1 (A. nidulans); nudE nuclear distribution gene E homolog 1 (A. nidulans); nuclear distribution protein nudE homolog 1; FLJ20101; NUDE; nudE nuclear distribution gene E homolog 1; LIS1-interacting protein NUDE1, rat homolog; LIS4; NUDE1; HOM-TES-87;

Gene ID [54820](#)

mRNA Refseq [NM_017668](#)

Protein Refseq [NP_060138](#)

MIM [609449](#)

 Tel: 1-631-559-9269 1-516-512-3133

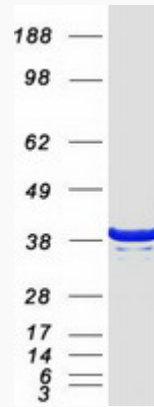
 Email: info@creative-biomart.com  Fax: 1-631-938-8127

 45-1 Ramsey Road, Shirley, NY 11967, USA

UniProt ID

Q9NXR1

SDS-PAGE



 Tel: 1-631-559-9269 1-516-512-3133

 Email: info@creative-biomart.com  Fax: 1-631-938-8127

 45-1 Ramsey Road, Shirley, NY 11967, USA