

# Recombinant Human NDE1 Protein, Myc/DDK-tagged, C13 and N15-labeled

**Cat. No.** NDE1-789H    **Lot. No.** (See product label)

## SPECIFICATION

### Product Overview

NDE1 MS Standard C13 and N15-labeled recombinant protein (NP\_001137451) with a C-terminal MYC/DDK tag, was expressed in HEK293 cells.

### Species

Human

### Source

HEK293

### Description

This gene encodes a member of the nuclear distribution E (NudE) family of proteins. The encoded protein is localized at the centrosome and interacts with other centrosome components as part of a multiprotein complex that regulates dynein function. This protein plays an essential role in microtubule organization, mitosis and neuronal migration. Mutations in this gene cause lissencephaly 4, a disorder characterized by lissencephaly, severe brain atrophy, microcephaly, and severe cognitive disability. Alternative splicing results in multiple transcript variants.

### Molecular Mass

37.7 kDa

### AA Sequence

MEDSGKTFSSSEEEANYWKDLAMTYKQRAENTQEELREFQEGSREYEALETQLQ  
 QIETNRDLLSENNRLRMELETIKEKFEVQHSEGYRQISALEDDLAQTKAIKDQLQKY  
 IRELEQANDDLERAKRATIMSLEDFEQRLNQAIFERNAFLESELDEKENLLESVQRLKD  
 EARDLRQELAVQQKQEKPRIPMPSSVEAERTDTAVQATGSPSTPIAHRGPSSSLN  
 TPGSFRRGLDDSTGGTPLTPAARISALNIVGDLLRKVGALESKLASCRNLVYDQSPN  
 RTGGPASGRSSKNRDGGERRPSSTSVPLGDKGLDTSRWLSKSTTRSSSSCTRTR

 Tel: 1-631-559-9269    1-516-512-3133

 Email: [info@creative-biomart.com](mailto:info@creative-biomart.com)     Fax: 1-631-938-8127

 45-1 Ramsey Road, Shirley, NY 11967, USA

PLEQKLISEEDLAANDILDYKDDDDKV

**Purity** > 80% as determined by SDS-PAGE and Coomassie blue staining

**Stability** Stable for 3 months from receipt of products under proper storage and handling conditions.

**Storage** Store at -80 centigrade. Avoid repeated freeze-thaw cycles.

**Concentration** 50 µg/mL as determined by BCA

**Storage Buffer** 100 mM glycine, 25 mM Tris-HCl, pH 7.3.

## GENE INFORMATION

**Gene Name** [NDE1 nudE neurodevelopment protein 1 \[ Homo sapiens \(human\) \]](#)

**Official Symbol** [NDE1](#)

**Synonyms** NDE1; nudE nuclear distribution E homolog 1 (A. nidulans); nudE nuclear distribution gene E homolog 1 (A. nidulans); nuclear distribution protein nudE homolog 1; FLJ20101; NUDE; nudE nuclear distribution gene E homolog 1; LIS1-interacting protein NUDE1, rat homolog; LIS4; NUDE1; HOM-TES-87;

**Gene ID** [54820](#)

**mRNA Refseq** [NM\\_001143979](#)

**Protein Refseq** [NP\\_001137451](#)

**MIM** [609449](#)

 Tel: 1-631-559-9269 1-516-512-3133

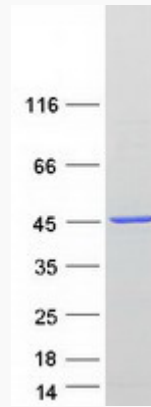
 Email: [info@creative-biomart.com](mailto:info@creative-biomart.com)  Fax: 1-631-938-8127

 45-1 Ramsey Road, Shirley, NY 11967, USA

UniProt ID

Q9NXR1

SDS-PAGE



 Tel: 1-631-559-9269 1-516-512-3133

 Email: [info@creative-biomart.com](mailto:info@creative-biomart.com)  Fax: 1-631-938-8127

 45-1 Ramsey Road, Shirley, NY 11967, USA