

Recombinant Full Length Human NDUFA7 Protein, C-Flag-tagged

Cat. No. NDUFA7-1989HFL Lot. No. (See product label)

SPECIFICATION

Product Overview	Recombinant Full Length Human NDUFA7 Protein, fused to Flag-tag at C-terminus, was expressed in Mammalian cells.
Species	Human
Source	Mammalian Cells
Description	This gene encodes a subunit of NADH:ubiquinone oxidoreductase (complex I), which is a multiprotein complex located in the inner mitochondrial membrane. Complex I functions in the transfer of electrons from NADH to the respiratory chain.
Form	25 mM Tris HCl, pH 7.3, 100 mM glycine, 10% glycerol.
Molecular Mass	12.4 kDa
AA Sequence	MASATRLIQRLRNWASGHDLQGKQLRLRYQEISKRTQPPPKLPVGPESHKLSNYYCT RDGRRESVPPSIIM SSQKALVSGKPAESSAVAATEKKAVTPAPPIKRWELSSDQPYL TRTRPLEQKLISEEDLAANDILDYKDDDDKV
Purity	> 80% as determined by SDS-PAGE and Coomassie blue staining.
Stability	Stable for 12 months from the date of receipt of the product under proper storage and handling conditions. Avoid repeated freeze-thaw cycles.

 Tel: 1-631-559-9269 1-516-512-3133

 Email: info@creative-biomart.com  Fax: 1-631-938-8127

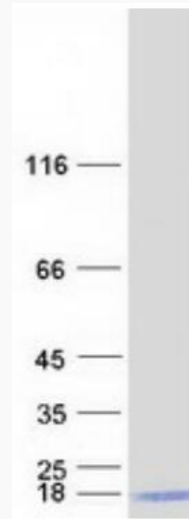
 45-1 Ramsey Road, Shirley, NY 11967, USA

Storage	Store at -80 centigrade.
Concentration	>50 ug/mL as determined by microplate BCA method.
Preparation	Recombinant protein was captured through anti-DDK affinity column followed by conventional chromatography steps.
Protein Pathways	Alzheimer's disease, Huntington's disease, Metabolic pathways, Oxidative phosphorylation, Parkinson's disease
Full Length	Full L.
GENE INFORMATION	
Gene Name	NDUFA7 NADH:ubiquinone oxidoreductase subunit A7 [Homo sapiens (human)]
Official Symbol	NDUFA7
Synonyms	B14.5a; CI-B14.5a
Gene ID	4701
mRNA Refseq	NM_005001.5
Protein Refseq	NP_004992.2
MIM	602139
UniProt ID	O95182

 Tel: 1-631-559-9269 1-516-512-3133

 Email: info@creative-biomart.com  Fax: 1-631-938-8127

 45-1 Ramsey Road, Shirley, NY 11967, USA



Coomassie blue staining of purified NDUFA7 protein.

 Tel: 1-631-559-9269 1-516-512-3133

 Email: info@creative-biomart.com  Fax: 1-631-938-8127

 45-1 Ramsey Road, Shirley, NY 11967, USA