

## Recombinant Human NEDD8 Protein (Met1-Gly76), N-His tagged

Cat. No. NEDD8-4677H Lot. No. (See product label)

### SPECIFICATION

<b>Product Overview</b>	Recombinant human NEDD8 (Met1-Gly76) fused with the N-terminal His tag was expressed in E. coli.
<b>Species</b>	Human
<b>Source</b>	E.coli
<b>ProteinLength</b>	Met1-Gly76
<b>Form</b>	Lyophilized powder/frozen liquid
<b>Molecular Mass</b>	8.36 kDa
<b>Purity</b>	>90% as determined by SDS-PAGE.
<b>Notes</b>	For research use only.
<b>Storage</b>	Use a manual defrost freezer and avoid repeated freeze thaw cycles. Store at 2 to 8 centigrade for one week. Store at -20 to -80 centigrade for twelve months from the date of receipt.
<b>Storage Buffer</b>	Supplied as solution form in PBS or lyophilized from PBS.
<b>Reconstitution</b>	Reconstitute in sterile water for a stock solution.

 Tel: 1-631-559-9269 1-516-512-3133

 Email: [info@creative-biomart.com](mailto:info@creative-biomart.com)  Fax: 1-631-938-8127

 45-1 Ramsey Road, Shirley, NY 11967, USA

**Shipping**

They are shipped out with dry ice/blue ice unless customers require otherwise.

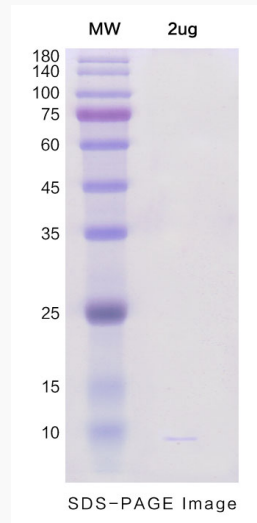
**GENE INFORMATION**

<b>Gene Name</b>	NEDD8 neural precursor cell expressed, developmentally down-regulated 8 [ Homo sapiens (human) ]
<b>Official Symbol</b>	NEDD8
<b>Synonyms</b>	NEDD8; neural precursor cell expressed, developmentally down-regulated 8; Nedd 8; neddylin; ubiquitin-like protein Nedd8; NEDD-8; FLJ43224; MGC104393; MGC125896; MGC125897;
<b>Gene ID</b>	4738
<b>mRNA Refseq</b>	NM_006156
<b>Protein Refseq</b>	NP_006147
<b>MIM</b>	603171
<b>UniProt ID</b>	Q15843

 Tel: 1-631-559-9269 1-516-512-3133 Email: [info@creative-biomart.com](mailto:info@creative-biomart.com)  Fax: 1-631-938-8127 45-1 Ramsey Road, Shirley, NY 11967, USA



**SDS-PAGE**



Tel: 1-631-559-9269 1-516-512-3133

Email: [info@creative-biomart.com](mailto:info@creative-biomart.com) Fax: 1-631-938-8127

45-1 Ramsey Road, Shirley, NY 11967, USA