

Recombinant Human NEDD9 Protein, His tagged

Cat. No. NEDD9-001H Lot. No. (See product label)

SPECIFICATION

Product Overview	Recombinant Human NEDD9 Protein with His tag was expressed in E. coli.
Species	Human
Source	E.coli
ProteinLength	153-366 aa
Description	The protein encoded by this gene is a member of the CRK-associated substrates family. Members of this family are adhesion docking molecules that mediate protein-protein interactions for signal transduction pathways. This protein is a focal adhesion protein that acts as a scaffold to regulate signaling complexes important in cell attachment, migration and invasion as well as apoptosis and the cell cycle. This protein has also been reported to have a role in cancer metastasis. Alternative splicing results in multiple transcript variants.
Tag	C-His
Molecular Mass	25 kDa
AA Sequence	MKVITPVRTGHGYVVEYPSRYQKDVIDIPPSHTTQGVYDIPPSSAKGPVFSVPVGEI KPQGVYDIPPTKGVYAIPPSACRDEAGLREKDYDFPPPMRQAGRDLRPEGVYDIP PTCTKPAGKDLHVKYNCDIPGAAEPVARRHQSLSPNHPPPQLGQSVGSQNDAYDV PRGVQFLEPPAETSEKANPQERDGVYDVPLHNPPDAKGSRDLDGINHHHHHHHH

 Tel: 1-631-559-9269 1-516-512-3133

 Email: info@creative-biomart.com  Fax: 1-631-938-8127

 45-1 Ramsey Road, Shirley, NY 11967, USA

Endotoxin	< 1 EU/μg by LAL.
Purity	> 90% by SDS-PAGE
Storage	Store it under sterile conditions at -20 to -80 centigrade. It is recommended that the protein be aliquoted for optimal storage. Avoid repeated freeze-thaw cycles.
Storage Buffer	Sterile PBS, pH7.4, 10% Glycerol
Concentration	1 mg/mL by BCA

GENE INFORMATION

Gene Name	NEDD9 neural precursor cell expressed, developmentally down-regulated 9 [Homo sapiens (human)]
Official Symbol	NEDD9
Synonyms	NEDD9; neural precursor cell expressed, developmentally down-regulated 9; enhancer of filamentation 1; Cas scaffolding protein family member 2; CAS L; Cas like; CASS2; HEF1; p105; NEDD-9; cas-like docking; Crk-associated substrate related; renal carcinoma antigen NY-REN-12; CRK-associated substrate-related protein; dJ761I2.1 (enhancer of filamentation (HEF1)); dJ49G10.2 (Enhancer of Filamentation 1 (HEF1)); neural precursor cell expressed developmentally down-regulated protein 9; CAS2; CASL; CAS-L; dJ49G10.2; dJ761I2.1
Gene ID	4739
mRNA Refseq	NM_001142393
Protein Refseq	NP_001135865

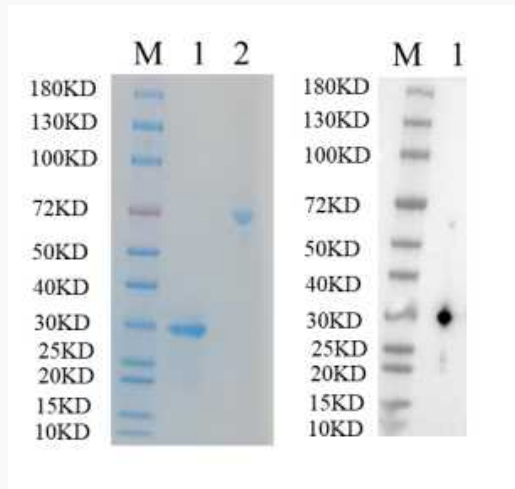
 Tel: 1-631-559-9269 1-516-512-3133

 Email: info@creative-biomart.com  Fax: 1-631-938-8127

 45-1 Ramsey Road, Shirley, NY 11967, USA

MIM 602265**UniProt ID** Q14511

**Reducing 4%-20%
SDS-PAGE (CBB
stained) and WB
(Anti-His Mouse
Monoclonal
antibody) analysis
profiles of purified
NEDD9.**



1. NEDD9
2. BSA

 Tel: 1-631-559-9269 1-516-512-3133

 Email: info@creative-biomart.com  Fax: 1-631-938-8127

 45-1 Ramsey Road, Shirley, NY 11967, USA