

Recombinant Human NEDD9 Protein, Myc/DDK-tagged, C13 and N15-labeled

Cat. No. NEDD9-3265H Lot. No. (See product label)

SPECIFICATION

Product Overview

NEDD9 MS Standard C13 and N15-labeled recombinant protein (NP_006394) with a C-terminal MYC/DDK tag, was expressed in HEK293 cells.

Species

Human

Source

HEK293

Description

The protein encoded by this gene is a member of the CRK-associated substrates family. Members of this family are adhesion docking molecules that mediate protein-protein interactions for signal transduction pathways. This protein is a focal adhesion protein that acts as a scaffold to regulate signaling complexes important in cell attachment, migration and invasion as well as apoptosis and the cell cycle. This protein has also been reported to have a role in cancer metastasis. Alternative splicing results in multiple transcript variants.

Molecular Mass

92.9 kDa

AA Sequence

MKYKNLMARALYDENVPECAEELAFRKGDILTVIEQNTGGLEGWWLCSLHGRQGIVP
GNRVKLLIGPMQETASSHEQPASGLMQQTFGQQKLYQVNPQAAPRDTIYQVPPSY
QNQGIYQVPTGHGTQEVEYQVPPSVQRSIGGTSOPHVGKKVITPVRTGHGYVVEY
PSRYQKDVYDIPPSHTTQGVYDIPPSSAKGPVFSVPVGEIKPQGVYDIPPTKGVYAIP
PSACRDEAGLREKDYDFPPPMRQAGRPDLRPEGVYDIPPTCTKPAGKDLHVKYNC
DIPGAAEPVARRHQSLSPNHPPPQLGQSVGSQNDAYDVPRGVQFLEPPAETSEKA

 Tel: 1-631-559-9269 1-516-512-3133

 Email: info@creative-biomart.com  Fax: 1-631-938-8127

 45-1 Ramsey Road, Shirley, NY 11967, USA

NPQERDGVYDVPLHNPPDAKGSRDLDVGINRLSFSSTGSTRSNMSTSSTSSKESL
 SASPAQDKRFLDPDTAIERLQRLQQALEMGVSSLMALVTTDWRCYGYMERHINEIR
 TAVDKVELFLKEYLHFVKGAVANAACLPELILHNKMKRELQRVEDSHQILSQTSHDLN
 ECSWSLNILAINKPQNKCDLDRFVMVAKTVPDDAKQLTTTINTNAEALFRPGPGSL
 HLKNGPESIMNSTEYPHGGSQGQLLHPGDHKAQAHNKALPPGLSKEQAPDCSSSD
 GSERSWMDDYDYVHLQGKEEFERQQKELLEKENIMKQNKMQLEHHQLSQFQLEEQ
 EITKPVENDISKWKPSQSLPTTNSGVSAQDRQLLCFYDQCETHFISLLNAIDALFSC
 VSSAQPPRIFVAHSKFVILSAHKLFIGDTLTRQVTAQDIRNKVMNSSNQLCEQLKTIV
 MATKMAALHYPSTTALQEMVHQVTDLSRNAQLFKRSLLEMATFTRTRPLEQKLISEE
 DLAANDILDYKDDDDKV

Purity > 80% as determined by SDS-PAGE and Coomassie blue staining

Stability Stable for 3 months from receipt of products under proper storage and handling conditions.

Storage Store at -80 centigrade. Avoid repeated freeze-thaw cycles.

Concentration 50 µg/mL as determined by BCA

Storage Buffer 100 mM glycine, 25 mM Tris-HCl, pH 7.3.

GENE INFORMATION

Gene Name NEDD9 neural precursor cell expressed, developmentally down-regulated 9 [Homo sapiens (human)]

Official Symbol NEDD9

Synonyms NEDD9; neural precursor cell expressed, developmentally down-regulated 9; enhancer of filamentation 1; Cas scaffolding protein family member 2; CAS L; Cas

 Tel: 1-631-559-9269 1-516-512-3133

 Email: info@creative-biomart.com  Fax: 1-631-938-8127

 45-1 Ramsey Road, Shirley, NY 11967, USA

like; CASS2; HEF1; p105; NEDD-9; cas-like docking; Crk-associated substrate related; renal carcinoma antigen NY-REN-12; CRK-associated substrate-related protein; dJ761I2.1 (enhancer of filamentation (HEF1)); dJ49G10.2 (Enhancer of Filamentation 1 (HEF1)); neural precursor cell expressed developmentally down-regulated protein 9; CAS2; CASL; CAS-L; dJ49G10.2; dJ761I2.1;

Gene ID [4739](#)

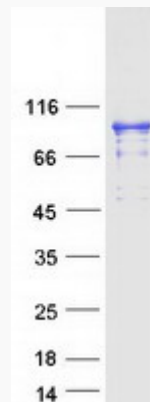
mRNA Refseq [NM_006403](#)

Protein Refseq [NP_006394](#)

MIM [602265](#)

UniProt ID [Q14511](#)

SDS-PAGE



 Tel: 1-631-559-9269 1-516-512-3133

 Email: info@creative-biomart.com  Fax: 1-631-938-8127

 45-1 Ramsey Road, Shirley, NY 11967, USA