

Recombinant Full Length Human NEDD9 Protein, C-Flag-tagged

Cat. No. NEDD9-76HFL Lot. No. (See product label)

SPECIFICATION

Product Overview	Recombinant Full Length Human NEDD9 Protein, fused to Flag-tag at C-terminus, was expressed in Mammalian cells.
Species	Human
Source	Mammalian Cells
Description	The protein encoded by this gene is a member of the CRK-associated substrates family. Members of this family are adhesion docking molecules that mediate protein-protein interactions for signal transduction pathways. This protein is a focal adhesion protein that acts as a scaffold to regulate signaling complexes important in cell attachment, migration and invasion as well as apoptosis and the cell cycle. This protein has also been reported to have a role in cancer metastasis. Alternative splicing results in multiple transcript variants.
Form	25 mM Tris HCl, pH 7.3, 100 mM glycine, 10% glycerol.
Molecular Mass	92.7 kDa
AA Sequence	MKYKNLMARALYDNVPECAEELAFRKGDILTVIEQNTGGLEGWWLCSLHGRQGIVP GNRVKLLIGPMQET ASSHEQPASGLMQQTFGQQKLYQVPNPQAAPRDTIYQVPPS YQNQGIYQVPTGHGTQEVEVYQVPPSVQR SIGGTSGPHVGKKVITPVRTGHGYVY EYPSRYQKDVEDIPPSHTTQGVYDIPPSSAKGPVFSVPVGEIKP QGVYDIPPTKGVY AIPPSACRDEAGLREKDYDFPPPMRQAGRPDLRPEGVYDIPPTCTKPAGKDLHVKY

 Tel: 1-631-559-9269 1-516-512-3133

 Email: info@creative-biomart.com  Fax: 1-631-938-8127

 45-1 Ramsey Road, Shirley, NY 11967, USA



N CDIPGAAEPVARRHQSLSPNHPPPQLGQSVGSQNDAYDVPRGVQFLEPPAETSE
KANPQERDGVYDVPLH NPPDAKGSRDLDVGINRLSFSSTGSTRSNMSTSSTSSKE
SSLSASPAQDKRFLDPDTAIERLQRLQQAL EMGVSSLMALVTTDWRCYGYMERHI
NEIRTAVDKVELFLKEYLHFVKGAVANAACLPELILHNKMKRELQ RVEDSHQILSQTS
HDLNECSWSLNLAINKPQNKCDLDRFVMVAKTVPDDAKQLTTTINTNAEALFRPG
PGSLHLKNGPESIMNSTEYPHGGSQGQLLHPGDHKAQAHNKALPPGLSKEQAPDC
SSSDGSESWMDDYD YVHLQGKEEFERQQKELLEKENIMKQNKMQLEHHQLSQF
QLLEQEITKPVENDISKWKPSQSLPTTNSGV SAQDRQLLCFYDQCETHFISLLNAID
ALFSCVSSAQPPRIFVAHSKFVILSAHKLFIGDTLTRQVTAQ
DIRNKVMNSSNQLCEQLKTIVMATKMAALHYPSTTALQEMVHQVTDLSRNAQLFKR
SLLMATFTRTRPLEQKLISEEDLAANDILDYKDDDDKV

Purity > 80% as determined by SDS-PAGE and Coomassie blue staining.

Stability Stable for 12 months from the date of receipt of the product under proper storage and handling conditions. Avoid repeated freeze-thaw cycles.

Storage Store at -80 centigrade.

Concentration >50 ug/mL as determined by microplate BCA method.

Preparation Recombinant protein was captured through anti-DDK affinity column followed by conventional chromatography steps.

Full Length Full L.

GENE INFORMATION

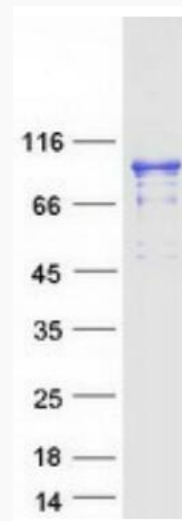
Gene Name [NEDD9 neural precursor cell expressed, developmentally down-regulated 9 \[Homo sapiens \(human\) \]](#)

Tel: 1-631-559-9269 1-516-512-3133

Email: info@creative-biomart.com Fax: 1-631-938-8127

45-1 Ramsey Road, Shirley, NY 11967, USA

Official Symbol	NEDD9
Synonyms	CAS2; CASL; HEF1; CAS-L; CASS2
Gene ID	4739
mRNA Refseq	NM_006403.4
Protein Refseq	NP_006394.1
MIM	602265
UniProt ID	Q14511



Coomassie blue staining of purified NEDD9 protein.

Tel: 1-631-559-9269 1-516-512-3133

Email: info@creative-biomart.com Fax: 1-631-938-8127

45-1 Ramsey Road, Shirley, NY 11967, USA