

## Recombinant Human NEFH, His-tagged

Cat. No. NEFH-1254H Lot. No. (See product label)

### SPECIFICATION

<b>Product Overview</b>	Recombinant Human NEFH protein(K677-K1026), fused with N-terminal His tag, was expressed in E. coli.
<b>Species</b>	Human
<b>Source</b>	E.coli
<b>ProteinLength</b>	K677-K1026
<b>Tag</b>	N-His
<b>Form</b>	Liquid in sterile PBS, pH7.4.
<b>Molecular Mass</b>	The protein has a calculated MW of 43 kDa.
<b>Endotoxin</b>	<1.0EU per 1µg (determined by the LAL method).
<b>Purity</b>	> 90 % as determined by SDS-PAGE.
<b>Storage</b>	Store it under sterile conditions at -80°C. It is recommended that the protein be aliquoted for optimal storage. Avoid repeated freeze-thaw cycles.
<b>Concentration</b>	1.0 mg/ml.
<b>Reconstitution</b>	Centrifuge the vial at 4°C before opening to recover the entire contents.

 Tel: 1-631-559-9269 1-516-512-3133

 Email: [info@creative-biomart.com](mailto:info@creative-biomart.com)  Fax: 1-631-938-8127

 45-1 Ramsey Road, Shirley, NY 11967, USA

**AA Sequence**

MGSSHHHHHHHHSSGLVPRGSHMASMTGGQQMGRGSKAEAKSPEKAKSPVK  
 AEAKSPEKAKSPVKEEAKSPEKAKSPVKEEAKSPEKAKSPVKEEAKTPEKAKSPVKE  
 EAKSPEKAKSPEKAKTLDVKSPEAKTPAKEEARSPADKFPKAKSPVKEEVKSPEKA  
 KSPLKEDAKAPEKEIPKKEEVKSPVKEEEKPQEVKVKPPKAAEEKAPATPKTEEK  
 KDSKKEEAPKKEAPKPKVEEKKEPAVEKPKESKVEAKKEEAEDKKKVPTPEKEAPA  
 KVEVKEDAKPKEKTEVAKKEPDDAKAKEPSKPAEKKEAAPEKKDTKEEKAKKPEEK  
 PKTEAKAKEDDKTLSKEPSKPKAEKAEKSSSTDQKDSKPPEKATEDKAAK GK

## GENE INFORMATION

<b>Gene Name</b>	NEFH neurofilament, heavy polypeptide [ Homo sapiens ]
<b>Official Symbol</b>	NEFH
<b>Synonyms</b>	NEFH; neurofilament, heavy polypeptide; neurofilament, heavy polypeptide 200kDa; neurofilament heavy polypeptide; NF-H; 200 kDa neurofilament protein; neurofilament triplet H protein; NFH;
<b>Gene ID</b>	4744
<b>mRNA Refseq</b>	NM_021076
<b>Protein Refseq</b>	NP_066554
<b>MIM</b>	162230
<b>UniProt ID</b>	P12036

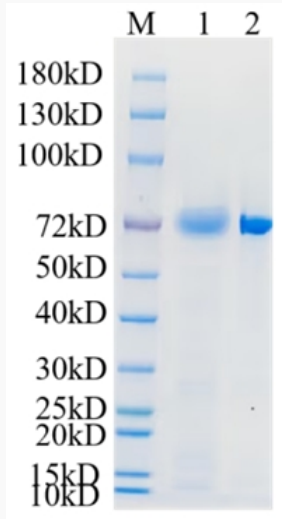
 Tel: 1-631-559-9269 1-516-512-3133

 Email: [info@creative-biomart.com](mailto:info@creative-biomart.com)  Fax: 1-631-938-8127

 45-1 Ramsey Road, Shirley, NY 11967, USA



SDS-PAGE



Tel: 1-631-559-9269 1-516-512-3133

Email: [info@creative-biomart.com](mailto:info@creative-biomart.com) Fax: 1-631-938-8127

45-1 Ramsey Road, Shirley, NY 11967, USA