

Recombinant Human NEFH Protein, Myc/DDK-tagged, C13 and N15-labeled

Cat. No. NEFH-2216H **Lot. No.** (See product label)

SPECIFICATION

Product Overview	NEFH MS Standard C13 and N15-labeled recombinant protein (NP_066554) with a C-terminal MYC/DDK tag, was expressed in HEK293 cells.
Species	Human
Source	HEK293
Description	Neurofilaments are type IV intermediate filament heteropolymers composed of light, medium, and heavy chains. Neurofilaments comprise the axoskeleton and functionally maintain neuronal caliber. They may also play a role in intracellular transport to axons and dendrites. This gene encodes the heavy neurofilament protein. This protein is commonly used as a biomarker of neuronal damage and susceptibility to amyotrophic lateral sclerosis (ALS) has been associated with mutations in this gene.
Molecular Mass	111.7 kDa
AA Sequence	MMSFGGADALLGAPFAPLHGGGSLHYALARKGGAGGTRSAAGSSSGFHSWTRTS VSSVSASPSRFRGAGAASSTDLSLDTLSNGPEGCMVAVATSRSEKEQLQALNDRFA GYIDKVRQLEAHNRSLEGEAAALRQQQAGRSAMGELYEREVREMRGAVLRLGAAR GQLRLEQEHLLEDIAHVRQRLDDEARQREEAEAAARALARFAQEAEARVDLQKKA QALQEECGYLRRXHQEEVGELLGQIQGSGAAQAQMQAETRDALKCDVTSALREIRA QLEGHAVQSTLQSEEWFRVRLDRLSEAAKVNTDAMRSAQEEITEYRRQLQARTTEL

 Tel: 1-631-559-9269 1-516-512-3133

 Email: info@creative-biomart.com  Fax: 1-631-938-8127

 45-1 Ramsey Road, Shirley, NY 11967, USA

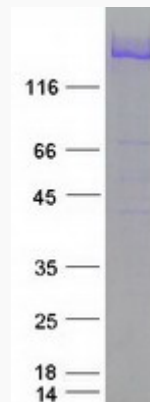
EALKSTKDSLQRSELEDRHQADIASYQEAIQQLDAELRNTKWEMAAQLREYQDL
 LNVKMALDIEIAAYRKLLEGEECRIGFGPIPFSLPEGLPKIPSVSTHIKVKSEEKIKVVE
 KSEKETVIVVEEQTEETQVTEEVTEEEKEAKEEEGKEEEGGEEEEEAEKGEEETKSP
 PAEEAASPEKEAKSPVKEEAKSPAFAKSPKEEAKSPAFAKSPKEEAKSPAFAKSPKEEAKS
 PPEAKSPEKEEAKSPAFAKSPKEEAKSPAFAKSPKEEAKSPAFAKSPKEEAKSPAFAKSP
 AKSPVKEEAKSPAFAKSPKEEAKSPAFAKSPKEEAKSPAFAKSPKEEAKSPAFAKSPKEEAKS
 KSPEKAKSPVKAFAKSPKEEAKSPAFAKSPKEEAKSPAFAKSPKEEAKSPAFAKSPKEEAKS
 KTPEKAKSPVKEEAKSPAFAKSPKEEAKSPAFAKSPKEEAKSPAFAKSPKEEAKSPAFAKSP
 PVKEEVKSPEKAKSPLKEDAKAPEKEIPKKEEVKSPVKEEEKPKQEVKVKPEPPKAAEE
 EKAPATPKTEEKDSKKEEAPKKEAPKPKVEEKKEPAVEKPKESKVEAKKEEAEDK
 KKVPTPEKEAPAKVEVKEDAKPKTEVAKKEPDDAKAKEPSKPAEKKEAAPEKDD
 TKEEKAKKPEEKPKTEAKAKEDDKTLSKEPSKPKAEKAEKSSSTDQKDSKPPEKATE
 DKAAGKTRTRPLEQKLISEEDLAANDILDYKDDDDKV

Purity	> 80% as determined by SDS-PAGE and Coomassie blue staining
Stability	Stable for 3 months from receipt of products under proper storage and handling conditions.
Storage	Store at -80 centigrade. Avoid repeated freeze-thaw cycles.
Concentration	50 µg/mL as determined by BCA
Storage Buffer	100 mM glycine, 25 mM Tris-HCl, pH 7.3.

GENE INFORMATION

Gene Name	NEFH neurofilament heavy [Homo sapiens (human)]
Official Symbol	NEFH

Synonyms	NEFH; neurofilament, heavy polypeptide; neurofilament, heavy polypeptide 200kDa; neurofilament heavy polypeptide; NF-H; 200 kDa neurofilament protein; neurofilament triplet H protein; NFH;
Gene ID	4744
mRNA Refseq	NM_021076
Protein Refseq	NP_066554
MIM	162230
UniProt ID	P12036

SDS-PAGE

 Tel: 1-631-559-9269 1-516-512-3133

 Email: info@creative-biomart.com  Fax: 1-631-938-8127

 45-1 Ramsey Road, Shirley, NY 11967, USA