

Recombinant Full Length Human NEFH Protein, C-Flag-tagged

Cat. No. NEFH-45HFL Lot. No. (See product label)

SPECIFICATION

Product Overview	Recombinant Full Length Human NEFH Protein, fused to Flag-tag at C-terminus, was expressed in Mammalian cells.
Species	Human
Source	Mammalian Cells
Description	Neurofilaments are type IV intermediate filament heteropolymers composed of light, medium, and heavy chains. Neurofilaments comprise the axoskeleton and functionally maintain neuronal caliber. They may also play a role in intracellular transport to axons and dendrites. This gene encodes the heavy neurofilament protein. This protein is commonly used as a biomarker of neuronal damage and susceptibility to amyotrophic lateral sclerosis (ALS) has been associated with mutations in this gene.
Form	25 mM Tris HCl, pH 7.3, 100 mM glycine, 10% glycerol.
Molecular Mass	111.7 kDa
AA Sequence	MMSFGGADALLGAPFAPLHGGGSLHYALARKGGAGGTRSAAGSSSGFHSWTRTS VSSVSASPSRFRGAGA ASSTDSDLTSLNGPEGCMVAVATSRSEKEQLQALNDRFA GYIDKVRQLEAHNRSLEGEAAALRQQQAGRS AMGELYEREVREMRGAVLRLGAAR GQLRLEQEHLLEDIAHVQRQLDDEARQREEAEAAARALARFAQEAE AARVDLQKKA QALQEECGYLRRXHQEEV GELLGQIQGSGAAQAQMQAETRDALKCDVTSALREIRA QLEG HAVQSTLQSEEWFRVRLDRLSEAAKVNTDAMRSAQEEITEYRRQLQARTTE

 Tel: 1-631-559-9269 1-516-512-3133

 Email: info@creative-biomart.com  Fax: 1-631-938-8127

 45-1 Ramsey Road, Shirley, NY 11967, USA

LEALKSTKDSLQRSELE DRHQADIASYQEAIQQLDAELRNTKWEMAAQLREYQD
 LLNVKMALDIEIAAYRKLLEGEECRIGFGPIPF SLPEGLPKIPSVSTHIKVKSEEKIKVV
 EKSEKETVIVEEQTEETQVTEEVTEEEEKEAKEEEGKEEEEGE EEEAEGGEEETKS
 PPAEEAASPEKEAKSPVKEEAKSPAEAKSPEKEEAKSPAEVKSPEKAKSPAKEEAK
 S PPEAKSPEKEEAKSPAEVKSPEKAKSPAKEEAKSPAEEKSPEKAKSPVKEEAKSL
 AEAKSPVKEEAKSPA EVKSPEKAKSPTKEEAKSPEKAKSPEKEEAKSPEKAKSPVK
 AEAKSPEKAKSPVKAEEKSPEKAKSPVKE EAKSPEKAKSPVKEEAKSPEKAKSPVK
 EEAKTPEKAKSPVKEEAKSPEKAKSPEKAKTLDVKSPEAKTPA KEEARSPADKFPE
 KAKSPVKEEVKSPEKAKSPLKEDAKAPEKEIPKKEEVKSPVKEEEKPQEVKVKEPPK
 KAEEEKAPATPKTEEEKDSKKEEAPKKEAPKPKVEEKKEPAVEKPKESKVEAKKEEA
 EDKKKVPTPEKEA PAKVEVKEDAKPKEKTEVAKKEPDDAKAKEPSKPAEKKEAAPE
 KKDTKEEKAKKPEEKPKTEAKAKEDDK
 TLSKEPSKPKAEKAEEKSSSTDQKDSKPPEKATEDKAAKGKTRTRPLEQKLISEEDLA
 ANDILDYKDDDDKV

Purity	> 80% as determined by SDS-PAGE and Coomassie blue staining.
Stability	Stable for 12 months from the date of receipt of the product under proper storage and handling conditions. Avoid repeated freeze-thaw cycles.
Storage	Store at -80 centigrade.
Concentration	>50 ug/mL as determined by microplate BCA method.
Preparation	Recombinant protein was captured through anti-DDK affinity column followed by conventional chromatography steps.
Protein Families	Druggable Genome
Protein Pathways	Amyotrophic lateral sclerosis (ALS)

 Tel: 1-631-559-9269 1-516-512-3133

 Email: info@creative-biomart.com  Fax: 1-631-938-8127

 45-1 Ramsey Road, Shirley, NY 11967, USA

Full Length Full L.

GENE INFORMATION

Gene Name NEFH neurofilament heavy chain [Homo sapiens (human)]

Official Symbol NEFH

Synonyms NFH; CMT2CC

Gene ID 4744

mRNA Refseq NM_021076.4

Protein Refseq NP_066554.2

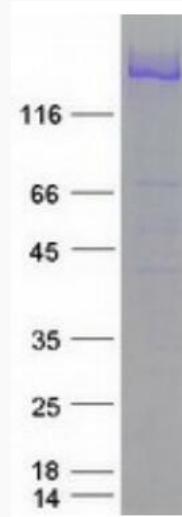
MIM 162230

UniProt ID P12036

 Tel: 1-631-559-9269 1-516-512-3133

 Email: info@creative-biomart.com  Fax: 1-631-938-8127

 45-1 Ramsey Road, Shirley, NY 11967, USA



Coomassie blue staining of purified NEFH protein.

Tel: 1-631-559-9269 1-516-512-3133

Email: info@creative-biomart.com Fax: 1-631-938-8127

45-1 Ramsey Road, Shirley, NY 11967, USA