

## Recombinant Human NEFL protein, MYC/DDK-tagged

Cat. No. NEFL-13H Lot. No. (See product label)

### SPECIFICATION

<b>Product Overview</b>	Recombinant Human NEFL fused with MYC/DDK tag at C-terminal was expressed in HEK293.
<b>Species</b>	Human
<b>Source</b>	HEK293
<b>Description</b>	Neurofilaments are type IV intermediate filament heteropolymers composed of light, medium, and heavy chains. Neurofilaments comprise the axoskeleton and they functionally maintain the neuronal caliber. They may also play a role in intracellular transport to axons and dendrites. This gene encodes the light chain neurofilament protein. Mutations in this gene cause Charcot-Marie-Tooth disease types 1F (CMT1F) and 2E (CMT2E), disorders of the peripheral nervous system that are characterized by distinct neuropathies. A pseudogene has been identified on chromosome Y.
<b>Form</b>	25 mM Tris.HCl, pH 7.3, 100 mM glycine, 10% glycerol.
<b>Molecular Mass</b>	61.3 kDa
<b>Purity</b>	> 80% as determined by SDS-PAGE and Coomassie blue staining
<b>Quality Control Test</b>	54.5 kDa
<b>Notes</b>	Recombinant protein was captured through anti-DDK affinity column followed by conventional chromatography steps.

 Tel: 1-631-559-9269 1-516-512-3133

 Email: [info@creative-biomart.com](mailto:info@creative-biomart.com)  Fax: 1-631-938-8127

 45-1 Ramsey Road, Shirley, NY 11967, USA

**Concentration** >50 ug/mL as determined by microplate BCA method

## GENE INFORMATION

**Gene Name** NEFL neurofilament, light polypeptide [ Homo sapiens ]

**Official Symbol** NEFL

**Synonyms** NEFL; neurofilament, light polypeptide; neurofilament, light polypeptide 68kDa; neurofilament light polypeptide; CMT1F; CMT2E; NF68; NFL; neurofilament subunit NF-L; neurofilament triplet L protein; neurofilament protein, light chain; light molecular weight neurofilament protein; NF-L; FLJ53642;

**Gene ID** 4747

**mRNA Refseq** NM\_006158

**Protein Refseq** NP\_006149

**MIM** 162280

**UniProt ID** P07196

**Chromosome Location** 8p21.2

**Pathway** Activation of NMDA receptor upon glutamate binding and postsynaptic events, organism-specific biosystem; Amyotrophic lateral sclerosis (ALS), organism-specific biosystem; Amyotrophic lateral sclerosis (ALS), conserved biosystem; CREB phosphorylation through the activation of CaMKII, organism-specific biosystem; CREB phosphorylation through the activation of Ras, organism-specific biosystem;

 Tel: 1-631-559-9269 1-516-512-3133

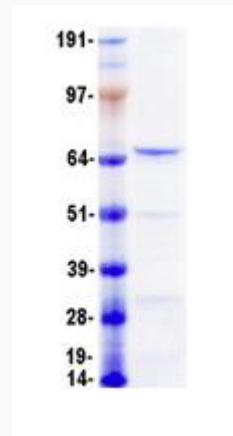
 Email: [info@creative-biomart.com](mailto:info@creative-biomart.com)  Fax: 1-631-938-8127

 45-1 Ramsey Road, Shirley, NY 11967, USA

Neuronal System, organism-specific biosystem; Neurotransmitter Receptor Binding And Downstream Transmission In The Postsynaptic Cell, organism-specific biosystem;

**Function**

identical protein binding; protein C-terminus binding; protein binding; structural constituent of cytoskeleton;



 Tel: 1-631-559-9269 1-516-512-3133

 Email: [info@creative-biomart.com](mailto:info@creative-biomart.com)  Fax: 1-631-938-8127

 45-1 Ramsey Road, Shirley, NY 11967, USA