

## Recombinant Mouse NEFL Protein (2-543 aa), His-tagged

Cat. No. NEFL-1472M Lot. No. (See product label)

### SPECIFICATION

<b>Product Overview</b>	Recombinant Mouse NEFL Protein (2-543 aa) is produced by Yeast expression system. This protein is fused with a 6xHis tag at the N-terminal. Protein Description: Full Length of Mature Protein.
<b>Species</b>	Mouse
<b>Source</b>	Yeast
<b>ProteinLength</b>	2-543 aa
<b>Description</b>	Neurofilaments usually contain three intermediate filament proteins: L, M, and H which are involved in the maintenance of neuronal caliber.
<b>Form</b>	Tris-based buffer,50% glycerol
<b>Molecular Mass</b>	63.4 kDa
<b>AA Sequence</b>	SSFGYDPYFSTSYKRRYVETPRVHISSVRSGYSTARSAYSSYSAPVSSSLSVRRSYS SSSGSLMPLENLDLSQVA AISNDLKSIRTQEKAQLQDLNDRFASFIERVHELEQQN KVLEAELLVLRQKHSEPSRFRALYEQEIRDRLAAEDATNEKQALQGEREGLEETLR NLQARYEEEEVLSREDAEGR LMEARKGADEAALARAELEKRIDSLMDEIAFLKKVHEE EIAELQAQIQYAQISVEMDVSSKPDLSAALKDIRAQYEKLA AKNMQNAEEWFKSRFT VLTESAAKNTDAVRAAKDEVSESRRLLKAKTLEIEACRGMNEALEKQLQELEDKQNA DISAMQDTINKLENELRSTKSEMARYLKEYQDLLNVKMALDIEIAAYRKLLEGEETRL SFTSVGSITSGYSQSSQVFGRSAYSGLQSSSYLMSARSFPAYYTSHVQEEQTEVEE

 Tel: 1-631-559-9269 1-516-512-3133

 Email: [info@creative-biomart.com](mailto:info@creative-biomart.com)  Fax: 1-631-938-8127

 45-1 Ramsey Road, Shirley, NY 11967, USA

TIEATKAEEAKDEPPSEGEAEKEKEKEEGEEEGAEKEEAAKDESEDTKEEEGG  
EGEEEDTKESKEEKEESAGEEQVAKKDD

**Purity** > 90% as determined by SDS-PAGE.

**Notes** Repeated freezing and thawing is not recommended. Store working aliquots at 4 centigrade for up to one week.

**Storage** The shelf life is related to many factors, storage state, buffer ingredients, storage temperature and the stability of the protein itself. Generally, the shelf life of liquid form is 6 months at -20 centigrade/-80 centigrade. The shelf life of lyophilized form is 12 months at -20 centigrade/-80 centigrade.

**Concentration** A hardcopy of COA with reconstitution instruction is sent along with the products.

## GENE INFORMATION

**Gene Name** [Nefl neurofilament, light polypeptide \[ Mus musculus \]](#)

**Official Symbol** [NEFL](#)

**Synonyms** NEFL; Nfi; NF-L; NF68; CMT2E; AI847934;

**Gene ID** [18039](#)

**mRNA Refseq** [NM\\_010910](#)

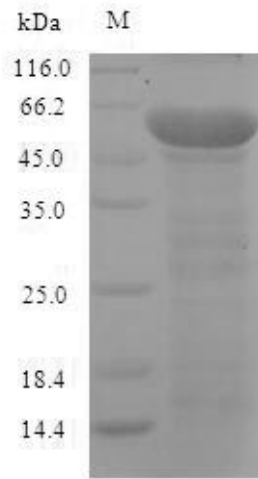
**Protein Refseq** [NP\\_035040](#)

**UniProt ID** [P08551](#)

 Tel: 1-631-559-9269 1-516-512-3133

 Email: [info@creative-biomart.com](mailto:info@creative-biomart.com)  Fax: 1-631-938-8127

 45-1 Ramsey Road, Shirley, NY 11967, USA



(Tris-Glycine gel) Discontinuous SDS-PAGE (reduced) with 5% enrichment gel and 15% separation gel.

 Tel: 1-631-559-9269 1-516-512-3133

 Email: [info@creative-biomart.com](mailto:info@creative-biomart.com)  Fax: 1-631-938-8127

 45-1 Ramsey Road, Shirley, NY 11967, USA