

Recombinant Human NEFL Protein, His-tagged

Cat. No. NEFL-16H Lot. No. (See product label)

SPECIFICATION

Product Overview	Recombinant Human NEFL Protein, His-tagged, expressed in E.coli.
Species	Human
Source	E.coli
Protein Length	1-360 aa
Description	Purified recombinant protein of Human neurofilament, light polypeptide (NEFL), Met1-Thr360, with N-terminal His tag, expressed in E.coli.
Tag	N-His
Molecular Mass	41.1 kDa
Purity	> 80% as determined by SDS-PAGE and Coomassie blue staining
Notes	For testing in cell culture applications, please filter before use. Note that you may experience some loss of protein during the filtration process.
Stability	Stable for 12 months from the date of receipt of the product under proper storage and handling conditions. Avoid repeated freeze-thaw cycles.
Storage	Store at -80°C after receiving vials.

 Tel: 1-631-559-9269 1-516-512-3133

 Email: info@creative-biomart.com  Fax: 1-631-938-8127

 45-1 Ramsey Road, Shirley, NY 11967, USA



Concentration >0.05 µg/µL as determined by microplate BCA method

Storage Buffer 50 mM Tris-HCl, pH 8.0, 8 M urea

GENE INFORMATION

Gene Name NEFL neurofilament light chain [Homo sapiens (human)]

Official Symbol NEFL

Synonyms NFL,NF-L,NF68,CMT1F, CMT2E,CMTDIG,PPP1R110,NEFL

Gene ID 4747

mRNA Refseq NM_006158

Protein Refseq NP_006149

MIM 162280

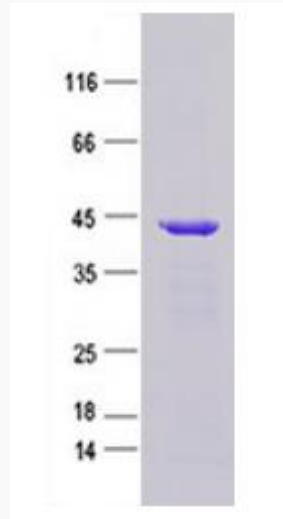
UniProt ID P07196

 Tel: 1-631-559-9269 1-516-512-3133

 Email: info@creative-biomart.com  Fax: 1-631-938-8127

 45-1 Ramsey Road, Shirley, NY 11967, USA

Purified recombinant protein NEFL was analyzed by SDS-PAGE gel and Coomossie Blue Staining.



SDS-PAGE gel and Coomossie Blue Staining

 Tel: 1-631-559-9269 1-516-512-3133

 Email: info@creative-biomart.com  Fax: 1-631-938-8127

 45-1 Ramsey Road, Shirley, NY 11967, USA