

## Recombinant Human NEFL Protein, His-tagged

Cat. No. NEFL-17H Lot. No. (See product label)

### SPECIFICATION

<b>Product Overview</b>	Recombinant Human NEFL Protein, His-tagged, expressed in E.coli.
<b>Species</b>	Human
<b>Source</b>	E.coli
<b>Protein Length</b>	90-400 aa
<b>Description</b>	Purified recombinant protein of Human neurofilament, light polypeptide (NEFL), Glu90-Leu400, with N-terminal His tag, expressed in E.coli.
<b>Tag</b>	N-His
<b>Molecular Mass</b>	36.0 kDa
<b>Purity</b>	> 80% as determined by SDS-PAGE and Coomassie blue staining
<b>Notes</b>	For testing in cell culture applications, please filter before use. Note that you may experience some loss of protein during the filtration process.
<b>Stability</b>	Stable for 12 months from the date of receipt of the product under proper storage and handling conditions. Avoid repeated freeze-thaw cycles.
<b>Storage</b>	Store at -80°C after receiving vials.

 Tel: 1-631-559-9269 1-516-512-3133

 Email: [info@creative-biomart.com](mailto:info@creative-biomart.com)  Fax: 1-631-938-8127

 45-1 Ramsey Road, Shirley, NY 11967, USA

**Concentration** >0.05 µg/µL as determined by microplate BCA method

**Storage Buffer** 50 mM Tris-HCl, pH 8.0, 8 M urea

## GENE INFORMATION

**Gene Name** NEFL neurofilament light chain [ Homo sapiens (human) ]

**Official Symbol** NEFL

**Synonyms** NFL,NF-L,NF68,CMT1F, CMT2E,CMTDIG,PPP1R110,NEFL

**Gene ID** 4747

**mRNA Refseq** NM\_006158

**Protein Refseq** NP\_006149

**MIM** 162280

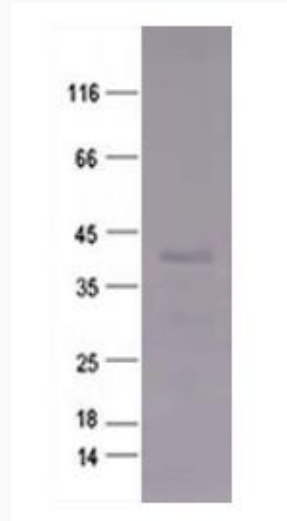
**UniProt ID** P07196

 Tel: 1-631-559-9269 1-516-512-3133

 Email: [info@creative-biomart.com](mailto:info@creative-biomart.com)  Fax: 1-631-938-8127

 45-1 Ramsey Road, Shirley, NY 11967, USA

**Purified recombinant protein NEFL was analyzed by SDS-PAGE gel and Coomossie Blue Staining.**



SDS-PAGE gel and Coomossie Blue Staining

 Tel: 1-631-559-9269 1-516-512-3133

 Email: [info@creative-biomart.com](mailto:info@creative-biomart.com)  Fax: 1-631-938-8127

 45-1 Ramsey Road, Shirley, NY 11967, USA